

DESCRIPTION

Species Reactivity	Human/Mouse
Specificity	Detects mouse and human Ghrelin/Obestatin prepropeptide in ELISA. Detects human Ghrelin peptides (acylated and de-acylated) in ELISA.
Source	Monoclonal Rat IgG _{2A} Clone # 883622
Purification	Protein A or G purified from hybridoma culture supernatant
Immunogen	<i>E. coli</i> -derived recombinant mouse Obestatin/Ghrelin prepropeptide Gly24-Lys117 Accession # Q9EQX0
Formulation	Lyophilized from a 0.2 µm filtered solution in PBS with Trehalose. See Certificate of Analysis for details. *Small pack size (-SP) is supplied as a 0.2 µm filtered solution in PBS.

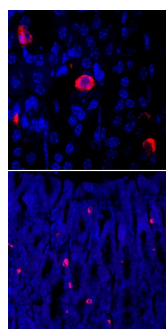
APPLICATIONS

Please Note: Optimal dilutions should be determined by each laboratory for each application. *General Protocols* are available in the *Technical Information* section on our website.

	Recommended Concentration	Sample
Immunohistochemistry	8-25 µg/mL	See Below

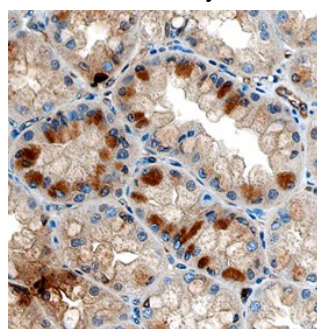
DATA

Immunohistochemistry



Ghrelin in Mouse Stomach. Ghrelin was detected in immersion fixed frozen sections of mouse stomach using Rat Anti-Human/Mouse Ghrelin Monoclonal Antibody (Catalog # MAB8200) at 10 µg/mL overnight at 4 °C. Tissue was stained using the NorthernLights™ 567-conjugated Anti-Mouse IgG Secondary Antibody (red; Catalog # NL007) and counterstained with DAPI (blue). Specific staining is shown at both 60x magnification (upper panel) and 20x magnification (lower panel). Staining was localized to cytoplasm and gastric endocrine cells, respectively. View our protocol for [Fluorescent IHC Staining of Frozen Tissue Sections](#).

Immunohistochemistry



Ghrelin in Human Stomach. Ghrelin was detected in immersion fixed paraffin-embedded sections of human stomach using Rat Anti-Human/Mouse Ghrelin Monoclonal Antibody (Catalog # MAB8200) at 15 µg/mL overnight at 4 °C. Tissue was stained using the Anti-Rat HRP-DAB Cell & Tissue Staining Kit (brown; Catalog # CTS017) and counterstained with hematoxylin (blue). Specific staining was localized to glandular epithelial cells. View our protocol for [Chromogenic IHC Staining of Paraffin-embedded Tissue Sections](#).

PREPARATION AND STORAGE

Reconstitution	Reconstitute at 0.5 mg/mL in sterile PBS.
Shipping	The product is shipped at ambient temperature. Upon receipt, store it immediately at the temperature recommended below. *Small pack size (-SP) is shipped with polar packs. Upon receipt, store it immediately at -20 to -70 °C
Stability & Storage	Use a manual defrost freezer and avoid repeated freeze-thaw cycles. <ul style="list-style-type: none"> • 12 months from date of receipt, -20 to -70 °C as supplied. • 1 month, 2 to 8 °C under sterile conditions after reconstitution. • 6 months, -20 to -70 °C under sterile conditions after reconstitution.

BACKGROUND

GHRL (Ghrelin/Obestatin Prepropeptide) is a 117 aa precursor peptide that is processed into two chains, Ghrelin (aa24-51) and Obestatin (aa76-98). The 18 kDa prepropeptide is cleaved into proGhrelin, and then further processed into mature Ghrelin by prohormone convertases. Mature Ghrelin is modified with an N-octanoyl group on serine 3 which is required for receptor binding. Ghrelin and Obestatin are predominantly synthesized in the gastric mucosa. Ghrelin plays a role in growth factor release and appetite suppression as well as many other functions in a variety of organs. Obestatin is a putative hormone that has been suggested to have opposite effects on growth factor release and appetite as Ghrelin.