

## DESCRIPTION

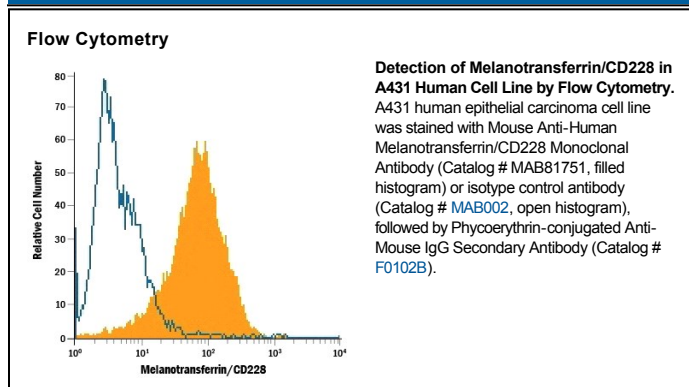
<b>Species Reactivity</b>	Human
<b>Specificity</b>	Detects human Melanotransferrin/CD228 in direct ELISAs.
<b>Source</b>	Monoclonal Mouse IgG <sub>1</sub> Clone # 893416
<b>Purification</b>	Protein A or G purified from hybridoma culture supernatant
<b>Immunogen</b>	HEK293 human embryonic kidney cell line transfected with human Melanotransferrin/CD228 Gly20-Gly711 Accession # P08582
<b>Formulation</b>	Lyophilized from a 0.2 µm filtered solution in PBS with Trehalose. See Certificate of Analysis for details. *Small pack size (-SP) is supplied as a 0.2 µm filtered solution in PBS.

## APPLICATIONS

**Please Note:** Optimal dilutions should be determined by each laboratory for each application. *General Protocols* are available in the *Technical Information* section on our website.

	<b>Recommended Concentration</b>	<b>Sample</b>
<b>Flow Cytometry</b>	0.25 µg/10 <sup>6</sup> cells	See Below
<b>CyTOF-ready</b>	Ready to be labeled using established conjugation methods. No BSA or other carrier proteins that could interfere with conjugation.	

## DATA



## PREPARATION AND STORAGE

<b>Reconstitution</b>	Reconstitute at 0.5 mg/mL in sterile PBS.
<b>Shipping</b>	The product is shipped at ambient temperature. Upon receipt, store it immediately at the temperature recommended below. *Small pack size (-SP) is shipped with polar packs. Upon receipt, store it immediately at -20 to -70 °C
<b>Stability &amp; Storage</b>	<b>Use a manual defrost freezer and avoid repeated freeze-thaw cycles.</b> <ul style="list-style-type: none"> <li>● 12 months from date of receipt, -20 to -70 °C as supplied.</li> <li>● 1 month, 2 to 8 °C under sterile conditions after reconstitution.</li> <li>● 6 months, -20 to -70 °C under sterile conditions after reconstitution.</li> </ul>

## BACKGROUND

Melanotransferrin, also known as MTF, CD228, Melanoma-associated Antigen p97, MAP97 and MFI2, is a 90-97 kDa sialoglycoprotein member of the transferrin family. Unlike other transferrins, which are secreted, MTF is usually found tethered to the cell membrane by a glycosyl phosphatidyl inositol anchor, with only small amounts of soluble protein detected. MTF is highly expressed on melanoma cells, and at lower levels in salivary gland, pancreas, kidney and testis. Like other transferrins, MTF is an iron-binding protein, and may play roles in cellular proliferation, tumorigenesis, metastasis and migration. Full-length human, mouse and rat MTF is 738 amino acids (aa). Over aa 1-711, human MTF shares 85 and 86% aa identity with mouse and rat MTF, respectively.