

DESCRIPTION

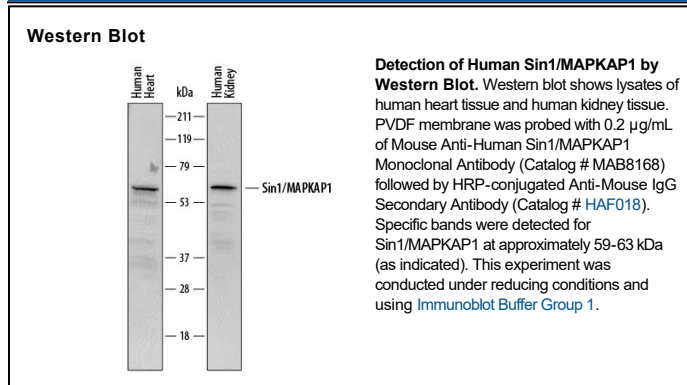
Species Reactivity	Human
Specificity	Detects human Sin1/MAPKAP1 in ELISA.
Source	Monoclonal Mouse IgG _{2A} Clone # 752219
Purification	Protein A or G purified from hybridoma culture supernatant
Immunogen	<i>E. coli</i> -derived recombinant human Sin1/MAPKAP1 Lys408-Gln522 Accession # Q9BPZ7
Formulation	Lyophilized from a 0.2 µm filtered solution in PBS with Trehalose. See Certificate of Analysis for details. *Small pack size (-SP) is supplied either lyophilized or as a 0.2 µm filtered solution in PBS.

APPLICATIONS

Please Note: Optimal dilutions should be determined by each laboratory for each application. *General Protocols* are available in the *Technical Information* section on our website.

	Recommended Concentration	Sample
Western Blot	0.2 µg/mL	See Below

DATA



PREPARATION AND STORAGE

Reconstitution	Reconstitute at 0.5 mg/mL in sterile PBS.
Shipping	The product is shipped at ambient temperature. Upon receipt, store it immediately at the temperature recommended below. *Small pack size (-SP) is shipped with polar packs. Upon receipt, store it immediately at -20 to -70 °C
Stability & Storage	Use a manual defrost freezer and avoid repeated freeze-thaw cycles. <ul style="list-style-type: none"> ● 12 months from date of receipt, -20 to -70 °C as supplied. ● 1 month, 2 to 8 °C under sterile conditions after reconstitution. ● 6 months, -20 to -70 °C under sterile conditions after reconstitution.

BACKGROUND

MAPKAP1 (mitogen-activated protein kinase (MAPK) associated protein-1), also called Mip1 (MAPK interacting protein 1) or Sin1 (stress-activated protein kinase (SAPK) interacting 1), is a widely expressed 59-65 kDa cytoplasmic phosphoprotein. MAPKAP1 binds to inactive forms of signaling molecules such as MEKK2 and Ras. Alternate mRNA splicing potentially creates isoforms of 323, 330, 372, 475, 486 and 522 amino acids (aa) in humans. The human MAPKAP1 region used as an immunogen is included in all except the smallest isoform, and shares 96% aa sequence identity with mouse and rat MAPKAP1.