

DESCRIPTION

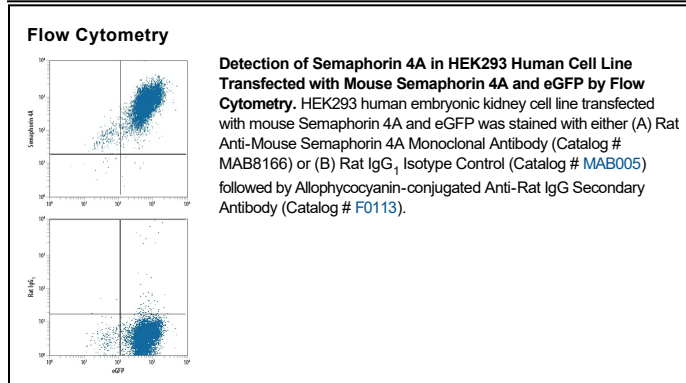
Species Reactivity	Mouse
Specificity	Detects mouse Semaphorin 4A in ELISA. Stains HEK293 cells transfected with mouse Semaphorin 4A by Flow Cytometry, but does not stain untransfected cells.
Source	Monoclonal Rat IgG ₁ Clone # 757129
Purification	Protein A or G purified from hybridoma culture supernatant
Immunogen	Mouse myeloma cell line NS0-derived recombinant mouse Semaphorin 4A Thr33-Trp638 Accession # Q62178
Formulation	Lyophilized from a 0.2 µm filtered solution in PBS with Trehalose. See Certificate of Analysis for details. *Small pack size (-SP) is supplied either lyophilized or as a 0.2 µm filtered solution in PBS.

APPLICATIONS

Please Note: Optimal dilutions should be determined by each laboratory for each application. *General Protocols* are available in the *Technical Information* section on our website.

	Recommended Concentration	Sample
Flow Cytometry	2.5 µg/10 ⁶ cells	See Below
CyTOF-ready	Ready to be labeled using established conjugation methods. No BSA or other carrier proteins that could interfere with conjugation.	
Neutralization	Delgoffe, G. <i>et al.</i> (2013) <i>Nature</i> 501 :252.	

DATA



PREPARATION AND STORAGE

Reconstitution	Reconstitute at 0.5 mg/mL in sterile PBS.
Shipping	The product is shipped at ambient temperature. Upon receipt, store it immediately at the temperature recommended below. *Small pack size (-SP) is shipped with polar packs. Upon receipt, store it immediately at -20 to -70 °C
Stability & Storage	Use a manual defrost freezer and avoid repeated freeze-thaw cycles. <ul style="list-style-type: none"> ● 12 months from date of receipt, -20 to -70 °C as supplied. ● 1 month, 2 to 8 °C under sterile conditions after reconstitution. ● 6 months, -20 to -70 °C under sterile conditions after reconstitution.

BACKGROUND

Semaphorin 4A (Sema4A, previously semB) is type I transmembrane protein that is a Class 4 transmembrane Semaphorin with activity in the immune and nervous systems. It is expressed by dendritic cells, monocytes, T cells, B cells, astrocytes and oligodendrocytes, plus visceral smooth muscle and bronchial epithelial cells. The 760 amino acid (aa) mouse Sema4A contains a 650 aa extracellular domain (ECD, aa 33-682) with Sema, PSI and C2-type immunoglobulin domains. It interacts with B and D1 Plexins and lymphocyte TIM-2, enhancing dendritic cell-mediated T cell priming and Th1 responses. Sema4A interaction with endothelial cell plexin-D1 downregulates the actions of VEGF. Mutations of Sema4A are associated with retinitis pigmentosa and cone rod dystrophy in humans. Mouse Sema4A ECD shares 87% and 94% aa sequence identity with human and rat Sema4A, respectively, and shares approximately 35% aa identity with other Sema4 family members. Using this antibody, Sema4A has been shown to interact with Neuropilin-1 in vitro and in vivo to potentiate Treg cell function and survival.

References:

1. Delgoffe, G.M. *et al* (2013) *Nature* **501**:252.