

DESCRIPTION

Species Reactivity	Mouse
Specificity	Detects mouse MIXL1 in ELISAs.
Source	Monoclonal Rat IgG _{2A} Clone # 868132
Purification	Protein A or G purified from hybridoma culture supernatant
Immunogen	<i>E. coli</i> -derived recombinant mouse MIXL1 Lys147-Phe231 Accession # Q9WV10
Formulation	Lyophilized from a 0.2 µm filtered solution in PBS with Trehalose. See Certificate of Analysis for details. *Small pack size (-SP) is supplied either lyophilized or as a 0.2 µm filtered solution in PBS.

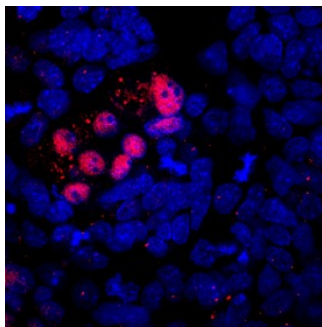
APPLICATIONS

Please Note: Optimal dilutions should be determined by each laboratory for each application. General Protocols are available in the Technical Information section on our website.

	Recommended Concentration	Sample
Immunocytochemistry	8-25 µg/mL	See Below

DATA

Immunocytochemistry



MIXL1 in D3 Mouse Embryonic Stem Cells. MIXL1 was detected in immersion fixed D3 mouse embryonic stem cells differentiated by LIF withdrawal for 3 days using Rat Anti-Mouse MIXL1 Monoclonal Antibody (Catalog # MAB8099) at 10 µg/mL for 3 hours at room temperature. Cells were stained using the NorthernLights™ 557-conjugated Anti-Rat IgG Secondary Antibody (red; Catalog # NL013) and counterstained with DAPI (blue). Specific staining was localized to nuclei in a subset of differentiating cells. View our protocol for [Fluorescent ICC Staining of Stem Cells on Coverslips](#).

PREPARATION AND STORAGE

Reconstitution	Reconstitute at 0.5 mg/mL in sterile PBS.
Shipping	The product is shipped at ambient temperature. Upon receipt, store it immediately at the temperature recommended below. *Small pack size (-SP) is shipped with polar packs. Upon receipt, store it immediately at -20 to -70 °C
Stability & Storage	Use a manual defrost freezer and avoid repeated freeze-thaw cycles. <ul style="list-style-type: none"> ● 12 months from date of receipt, -20 to -70 °C as supplied. ● 1 month, 2 to 8 °C under sterile conditions after reconstitution. ● 6 months, -20 to -70 °C under sterile conditions after reconstitution.

BACKGROUND

MIXL1 (Mix-like 1) is a 36 kDa member of the paired-like homeodomain protein family. It is expressed in the primitive streak of the gastrulating embryo, and marks cells destined to form mesoderm and endoderm. It is also expressed in differentiating embryonic stem cells, immature B and T lymphocytes during normal hematopoiesis, and several B, T or myeloid lineage acute leukemias. The 231 amino acid (aa) human MIXL1 contains a homeobox domain at aa 86-145. The mouse MIXL1 immunogen (aa 147-231) shares 72% and 91% aa sequence identity with human and rat MIXL1, respectively.