

**DESCRIPTION**

<b>Species Reactivity</b>	Mouse
<b>Specificity</b>	Detects mouse Patched 2/PTCH2 in ELISAs. In direct ELISAs, less than 10% cross-reactivity with recombinant mouse Patched 1 or recombinant human Patched 2 is observed.
<b>Source</b>	Monoclonal Rat IgG <sub>2A</sub> Clone # 865619
<b>Purification</b>	Protein A or G purified from hybridoma culture supernatant
<b>Immunogen</b>	<i>E. coli</i> -derived recombinant mouse Patched 2/PTCH2 Glu79-Ser394 Accession # O35595
<b>Formulation</b>	Lyophilized from a 0.2 µm filtered solution in PBS with Trehalose. See Certificate of Analysis for details. *Small pack size (-SP) is supplied as a 0.2 µm filtered solution in PBS.

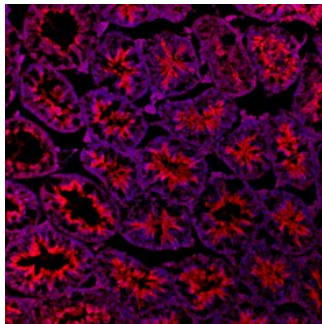
**APPLICATIONS**

**Please Note:** Optimal dilutions should be determined by each laboratory for each application. *General Protocols* are available in the *Technical Information* section on our website.

	<b>Recommended Concentration</b>	<b>Sample</b>
<b>Immunohistochemistry</b>	8-25 µg/mL	See Below

**DATA**

**Immunohistochemistry**



**Patched 2/PTCH2 in Mouse Testis.**  
Patched 2/PTCH2 was detected in immersion fixed frozen sections of mouse testis using Rat Anti-Mouse Patched 2/PTCH2 Monoclonal Antibody (Catalog # MAB8096) at 5 µg/mL overnight at 4 °C. Tissue was stained using the NorthernLights™ 557-conjugated Anti-Rat IgG Secondary Antibody (red; Catalog # NL013) and counterstained with DAPI (blue). View our protocol for [Fluorescent IHC Staining of Frozen Tissue Sections](#).

**PREPARATION AND STORAGE**

<b>Reconstitution</b>	Reconstitute at 0.5 mg/mL in sterile PBS.
<b>Shipping</b>	The product is shipped at ambient temperature. Upon receipt, store it immediately at the temperature recommended below. *Small pack size (-SP) is shipped with polar packs. Upon receipt, store it immediately at -20 to -70 °C
<b>Stability &amp; Storage</b>	<b>Use a manual defrost freezer and avoid repeated freeze-thaw cycles.</b> <ul style="list-style-type: none"> <li>● 12 months from date of receipt, -20 to -70 °C as supplied.</li> <li>● 1 month, 2 to 8 °C under sterile conditions after reconstitution.</li> <li>● 6 months, -20 to -70 °C under sterile conditions after reconstitution.</li> </ul>

**BACKGROUND**

Patched 2 (Ptch2) is a 180-200 kDa 12 transmembrane member of the Patched family. It is less widely expressed than Patched 1, but is found at high levels in skin and spermatocytes. The 1182 amino acid (aa) mouse Patched 2 contains two terminal cytoplasmic domains between aa 1-57 and aa 1108-1182. Together with Smoothed (SMO), Patched 2 forms a membrane complex that serves as a receptor for Sonic Hedgehog (Shh). Over the first extracellular loop (aa 79-394), mouse Patched 2 shares 95% aa sequence identity with human Patched 2. Mouse Patched 2 has one potential 1117 aa isoform that lacks aa 207-271.