

DESCRIPTION

| | |
|---------------------------|---|
| Species Reactivity | Human/Mouse/Rat |
| Specificity | Detects human YAP1 in ELISA. Detects human, mouse and rat YAP1 in Western blots. |
| Source | Monoclonal Mouse IgG ₁ Clone # 867711 |
| Purification | Protein A or G purified from hybridoma culture supernatant |
| Immunogen | <i>E. coli</i> -derived recombinant human YAP1 Ala347-Leu504 Accession # P46937 |
| Formulation | Lyophilized from a 0.2 µm filtered solution in PBS with Trehalose. See Certificate of Analysis for details. *Small pack size (-SP) is supplied either lyophilized or as a 0.2 µm filtered solution in PBS. |

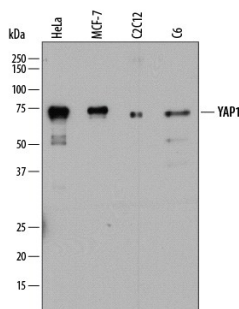
APPLICATIONS

Please Note: Optimal dilutions should be determined by each laboratory for each application. [General Protocols](#) are available in the Technical Information section on our website.

| | Recommended Concentration | Sample |
|-----------------------------|---|-----------|
| Western Blot | 2 µg/mL | See Below |
| Immunohistochemistry | 8-25 µg/mL | See Below |
| Simple Western | 20 µg/mL | See Below |
| CyTOF-reported | Brodie, T.M. <i>et al.</i> (2018) Cytometry Part A. 93 : 406. Ready to be labeled using established conjugation methods. No BSA or other carrier proteins that could interfere with conjugation. | |
| Knockout Validated | YAP1 is specifically detected in HeLa human cervical epithelial carcinoma parental cell line but is not detectable in YAP1 knockout HeLa cell line. | |

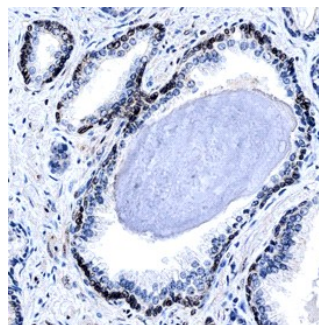
DATA

Western Blot



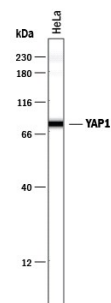
Detection of Human, Mouse, and Rat YAP1 by Western Blot. Western blot shows lysates of HeLa human cervical carcinoma cell line, MCF-7 human breast cancer cell line, C2C12 mouse myoblast cell line, and C6 rat glioma cell line. PVDF membrane was probed with 2 µg/mL of Mouse Anti-Human YAP1 Monoclonal Antibody (Catalog # MAB8094) followed by HRP-conjugated Anti-Mouse IgG Secondary Antibody (Catalog # HAF018). A specific band was detected for YAP1 at approximately 70-75 kDa (as indicated). This experiment was conducted under reducing conditions and using Immunoblot Buffer Group 1.

Immunohistochemistry



YAP1 in Human Prostate. YAP1 was detected in formalin fixed paraffin-embedded sections of human prostate using Mouse Anti-Human YAP1 Monoclonal Antibody (Catalog # MAB8094) at 15 µg/mL overnight at 4 °C. Before incubation with the primary antibody, tissue was subjected to heat-induced epitope retrieval using Antigen Retrieval Reagent-Basic (Catalog # CTS013). Tissue was stained using the Anti-Mouse HRP-DAB Cell & Tissue Staining Kit (brown; Catalog # CTS002) and counterstained with hematoxylin (blue). Specific staining was localized to the nuclei of smooth muscle cells. View our protocol for [Chromogenic IHC Staining of Paraffin-embedded Tissue Sections](#).

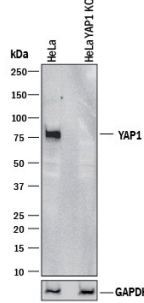
Simple Western



Detection of Human YAP1 by Simple Western™. Simple Western lane view shows lysates of HeLa human cervical epithelial carcinoma cell line, loaded at 0.5 mg/mL. A specific band was detected for YAP1 at approximately 79 kDa (as indicated) using 20 µg/mL of Mouse Anti-Human/Mouse/Rat YAP1 Monoclonal Antibody (Catalog # MAB8094). This experiment was conducted under reducing conditions and using the 12-230 kDa separation system.



Knockout Validated



Western Blot Shows Human YAP1 Specificity by Using Knockout Cell Line. Western blot shows lysates of HeLa human cervical epithelial carcinoma parental cell line and YAP1 knockout HeLa cell line (KO). PVDF membrane was probed with 2 µg/mL of Mouse Anti-Human/Mouse/Rat YAP1 Monoclonal Antibody (Catalog # MAB8094) followed by HRP-conjugated Anti-Mouse IgG Secondary Antibody (Catalog # HAF018). A specific band was detected for YAP1 at approximately 75 kDa (as indicated) in the parental HeLa cell line, but is not detectable in knockout HeLa cell line. GAPDH (Catalog # MAB5718) is shown as a loading control. This experiment was conducted under reducing conditions and using Immunoblot Buffer Group 1.

PREPARATION AND STORAGE

| | |
|--------------------------------|---|
| Reconstitution | Reconstitute at 0.5 mg/mL in sterile PBS. |
| Shipping | The product is shipped at ambient temperature. Upon receipt, store it immediately at the temperature recommended below. *Small pack size (-SP) is shipped with polar packs. Upon receipt, store it immediately at -20 to -70 °C |
| Stability & Storage | <p>Use a manual defrost freezer and avoid repeated freeze-thaw cycles.</p> <ul style="list-style-type: none"> ● 12 months from date of receipt, -20 to -70 °C as supplied. ● 1 month, 2 to 8 °C under sterile conditions after reconstitution. ● 6 months, -20 to -70 °C under sterile conditions after reconstitution. |

BACKGROUND

YAP1 (Yes-associated protein 1), also called YAP65 or Yorkie Homolog, is a widely expressed 65 kDa cytoplasmic and nuclear transcriptional regulator protein in the Hippo pathway that regulates organ size. The 504 amino acid (aa) human YAP1 contains two WW (tryptophan-containing protein binding) domains (aa 171-263), a transactivation domain (aa 219-504) and 19 sites that may be phosphorylated by kinases such as LATS1 and 2, MAPK8 and 9, CK1, or ABL1. Isoforms of 488, 454 and 326 aa lack aa 328-343, 230-267 (plus a 3 aa substitution for aa 329-343), or 1-178, respectively. YAP1 binds the Yes tyrosine kinase SH3 domain and many other proteins, notably ErbB4. YAP1 expression is increased in some liver and prostate cancers. Within aa 347-504, human YAP1 shares 94% and 93% aa sequence identity with mouse and rat YAP1, respectively.