

## DESCRIPTION

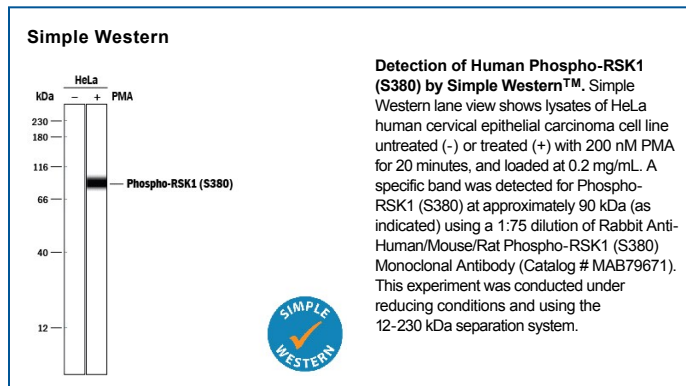
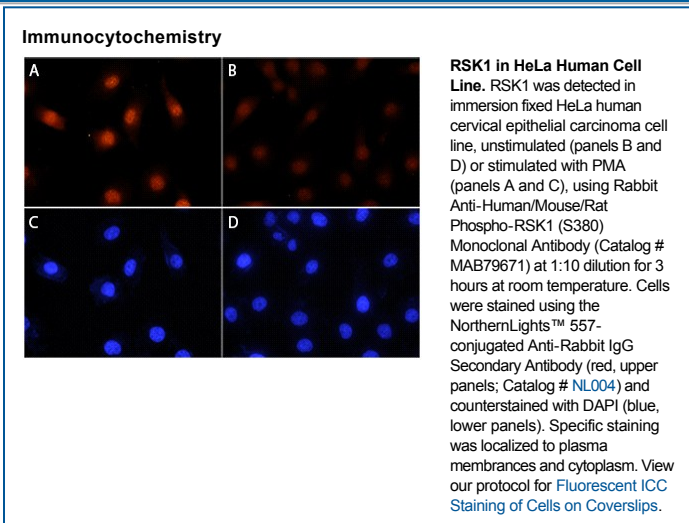
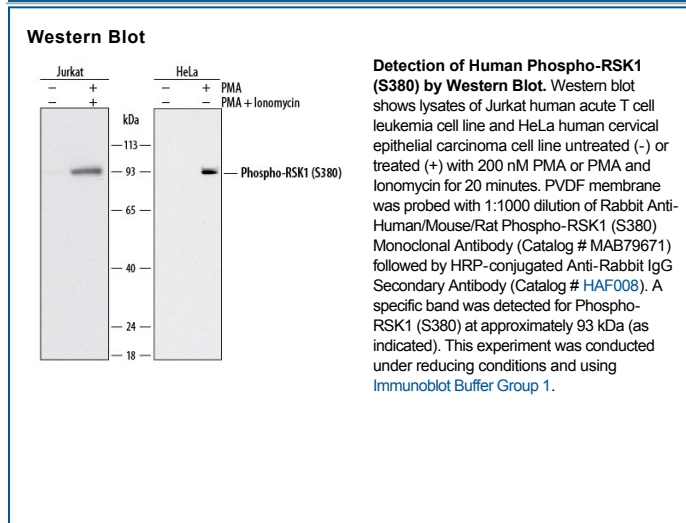
<b>Species Reactivity</b>	Human/Mouse/Rat
<b>Specificity</b>	Detects human, mouse, and rat RSK1 when phosphorylated at S380 in Western blots. Expected to detect RSK2, RSK3, and RSK4 phosphorylated at S386, S377, and S389, respectively, based on sequence homology.
<b>Source</b>	Recombinant Monoclonal Rabbit IgG Clone # 1024A
<b>Purification</b>	Protein A or G purified from cell culture supernatant
<b>Immunogen</b>	Phosphopeptide containing the human RSK1 S380 site Accession # Q15418
<b>Formulation</b>	Supplied as a solution in PBS containing BSA, Glycerol and Sodium Azide. See Certificate of Analysis for details. *Small pack size (-SP) is supplied as a 0.2 µm filtered solution in PBS.

## APPLICATIONS

**Please Note:** Optimal dilutions should be determined by each laboratory for each application. *General Protocols* are available in the *Technical Information* section on our website.

	<b>Recommended Concentration</b>	<b>Sample</b>
<b>Western Blot</b>	1:1000 dilution	See Below
<b>Immunocytochemistry</b>	1:10 dilution	See Below
<b>Simple Western</b>	1:75 dilution	See Below

## DATA



## PREPARATION AND STORAGE

<b>Shipping</b>	The product is shipped with polar packs. Upon receipt, store it immediately at the temperature recommended below. *Small pack size (-SP) is shipped with polar packs. Upon receipt, store it immediately at -20 to -70 °C
<b>Stability &amp; Storage</b>	<ul style="list-style-type: none"> <li>● 12 months from date of receipt, -20 °C as supplied.</li> <li>● 1 month, 2 to 8 °C under sterile conditions after opening.</li> <li>● 6 months, -20 °C under sterile conditions after opening.</li> </ul>

## BACKGROUND

RSK1 (ribosomal S6 kinase 1), gene name RPS6KA1 (ribosomal protein S6 kinase  $\alpha$ 1), also called p90RSK1 (90 kDa RSK1) or MAPKAPK 1a (MAPK-activated protein kinase 1a), is a widely expressed member of the RSK family of growth factor-regulated serine/threonine kinases. RSK proteins contain two non-identical kinase catalytic domains, and mediate activation of mitogen-activated kinase (MAPK) cascades and stimulation of cell proliferation and differentiation. Autophosphorylation on S380 allows binding of PDPK1, leading to further phosphorylation and full activation of RSK1 kinase activity. Human, mouse and rat RSK1 share 98% aa sequence identity, and are identical within the region of the peptide immunogen.

## PRODUCT SPECIFIC NOTICES

\* Contains <0.1% Sodium Azide, which is not hazardous at this concentration according to GHS classifications. Refer to SDS for additional information and handling instructions.