

## DESCRIPTION

<b>Species Reactivity</b>	Human
<b>Specificity</b>	Detects human Meteorin-like/METRNL in direct ELISAs.
<b>Source</b>	Recombinant Monoclonal Rabbit IgG Clone # 2441D
<b>Purification</b>	Protein A or G purified from cell culture supernatant
<b>Immunogen</b>	Chinese Hamster Ovary cell line, CHO-derived human Meteorin-like/METRNL Gln46-Asp311 Accession # Q641Q3
<b>Formulation</b>	Lyophilized from a 0.2 µm filtered solution in PBS with Trehalose. See Certificate of Analysis for details. *Small pack size (-SP) is supplied either lyophilized or as a 0.2 µm filtered solution in PBS.

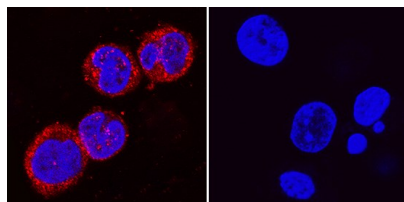
## APPLICATIONS

**Please Note:** Optimal dilutions should be determined by each laboratory for each application. [General Protocols](#) are available in the Technical Information section on our website.

	<b>Recommended Concentration</b>	<b>Sample</b>
<b>Immunocytochemistry</b>	3-25 µg/mL	See Below
<b>Immunohistochemistry</b>	3-25 µg/mL	See Below

## DATA

### Immunocytochemistry

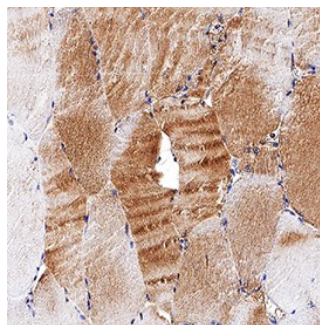


U937

U266

**Meteorin-like/METRNL in U937 Human Cell Line.**  
Meteorin-like/METRNL was detected in immersion fixed U937 human histiocytic lymphoma cell line (positive staining) and U266 human myeloma cell line (negative staining) using Rabbit Anti-Human Meteorin-like/METRNL Monoclonal Antibody (Catalog # MAB78672) at 3 µg/mL for 3 hours at room temperature. Cells were stained using the NorthernLights™ 557-conjugated Anti-Rabbit IgG Secondary Antibody (red; Catalog # NL004) and counterstained with DAPI (blue). Specific staining was localized to cytoplasm. View our protocol for [Fluorescent ICC Staining of Non-adherent Cells](#).

### Immunohistochemistry



**Meteorin-like/METRNL in Human Skeletal Muscle.** Meteorin-like/METRNL was detected in immersion fixed paraffin-embedded sections of human skeletal muscle using Rabbit Anti-Human Meteorin-like/METRNL Monoclonal Antibody (Catalog # MAB78672) at 3 µg/mL for 1 hour at room temperature followed by incubation with the Anti-Rabbit IgG VisUCyte™ HRP Polymer Antibody (Catalog # VC003). Before incubation with the primary antibody, tissue was subjected to heat-induced epitope retrieval using Antigen Retrieval Reagent-Basic (Catalog # CTS013). Tissue was stained using DAB (brown) and counterstained with hematoxylin (blue). Specific staining was localized to sarcoplasm. View our protocol for [IHC Staining with VisUCyte HRP Polymer Detection Reagents](#).

## PREPARATION AND STORAGE

<b>Reconstitution</b>	Reconstitute at 0.5 mg/mL in sterile PBS.
<b>Shipping</b>	The product is shipped at ambient temperature. Upon receipt, store it immediately at the temperature recommended below. *Small pack size (-SP) is shipped with polar packs. Upon receipt, store it immediately at -20 to -70 °C
<b>Stability &amp; Storage</b>	<b>Use a manual defrost freezer and avoid repeated freeze-thaw cycles.</b> <ul style="list-style-type: none"> <li>12 months from date of receipt, -20 to -70 °C as supplied.</li> <li>1 month, 2 to 8 °C under sterile conditions after reconstitution.</li> <li>6 months, -20 to -70 °C under sterile conditions after reconstitution.</li> </ul>

## BACKGROUND

METRNL (Meteorin-like) is a cytoplasmic 30 kDa (predicted) member of the meteorin family of proteins. The name meteorin derives from the ability of the founding family member meteorin to transform glia into cells containing an extensive, meteor-like tail. It is expressed by neurons, and appears to function as a primer molecule that sets the stage for either cell differentiation or neurite outgrowth when it acts with Dcl1 and SerpinB1. Mature human METRNL is 266 amino acids (aa) in length (aa 46-311). It reportedly contains a signal sequence (aa 1-45), which suggests it may be secreted. Mature human and mouse METRNL share 79% aa sequence identity.