

DESCRIPTION

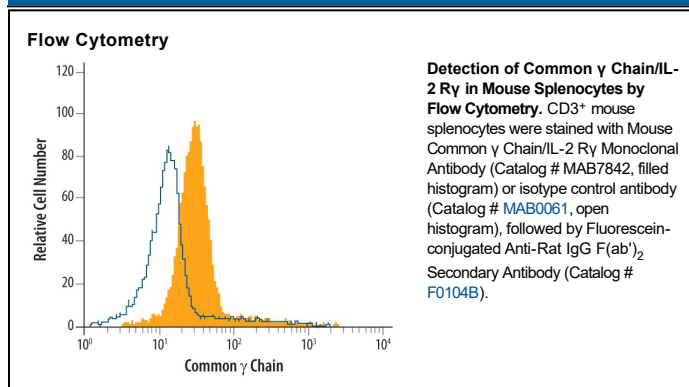
Species Reactivity	Mouse
Specificity	Detects mouse Common γ Chain/IL-2 R γ in direct ELISAs. In direct ELISAs, no cross-reactivity with recombinant mouse (rm) IL-2 R α , rmIL-2 R β , recombinant human (rh) IL-2 R γ , rhIL-15 R α , recombinant rat IL-2 R α , or recombinant canine IL-2 R α is observed.
Source	Monoclonal Rat IgG _{2B} Clone # 644346
Purification	Protein A or G purified from hybridoma culture supernatant
Immunogen	<i>S. frugiperda</i> insect ovarian cell line Sf21-derived recombinant mouse Common γ Chain/IL-2 R γ Trp23-Ala263 (predicted) Accession # P34902
Formulation	Lyophilized from a 0.2 μ m filtered solution in PBS with Trehalose. See Certificate of Analysis for details. *Small pack size (-SP) is supplied either lyophilized or as a 0.2 μ m filtered solution in PBS.

APPLICATIONS

Please Note: Optimal dilutions should be determined by each laboratory for each application. *General Protocols* are available in the *Technical Information* section on our website.

	Recommended Concentration	Sample
Flow Cytometry	2.5 μ g/10 ⁶ cells	See Below
CyTOF-ready	Ready to be labeled using established conjugation methods. No BSA or other carrier proteins that could interfere with conjugation.	

DATA



PREPARATION AND STORAGE

Reconstitution	Sterile PBS to a final concentration of 0.5 mg/mL.
Shipping	The product is shipped at ambient temperature. Upon receipt, store it immediately at the temperature recommended below. *Small pack size (-SP) is shipped with polar packs. Upon receipt, store it immediately at -20 to -70 °C
Stability & Storage	Use a manual defrost freezer and avoid repeated freeze-thaw cycles. <ul style="list-style-type: none"> ● 12 months from date of receipt, -20 to -70 °C as supplied. ● 1 month, 2 to 8 °C under sterile conditions after reconstitution. ● 6 months, -20 to -70 °C under sterile conditions after reconstitution.

BACKGROUND

The Common gamma Chain, also known as CD132, is a transmembrane protein belonging to the hematopoietin receptor family. γ c is a signaling component of the functional receptor complexes for IL-2, IL-4, IL-7, IL-9, and IL-15.