

DESCRIPTION

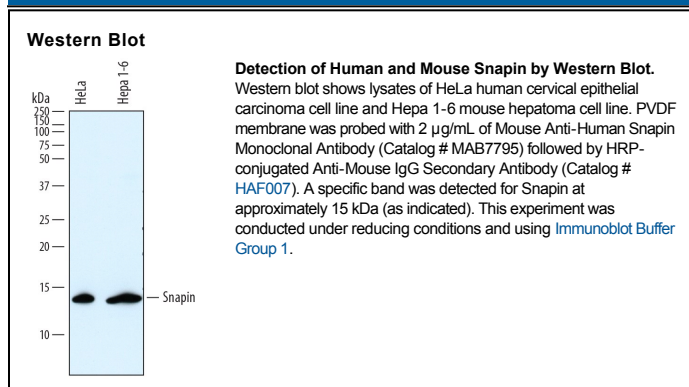
Species Reactivity	Human/Mouse
Specificity	Detects human Snapin in direct ELISAs and human and mouse Snapin in Western blots.
Source	Monoclonal Mouse IgG _{2A} Clone # 809116
Purification	Protein A or G purified from hybridoma culture supernatant
Immunogen	<i>E. coli</i> -derived recombinant human Snapin Met1-Lys136 Accession # O95295
Formulation	Lyophilized from a 0.2 µm filtered solution in PBS with Trehalose. See Certificate of Analysis for details. *Small pack size (-SP) is supplied as a 0.2 µm filtered solution in PBS.

APPLICATIONS

Please Note: Optimal dilutions should be determined by each laboratory for each application. *General Protocols* are available in the *Technical Information* section on our website.

	Recommended Concentration	Sample
Western Blot	2 µg/mL	See Below

DATA



PREPARATION AND STORAGE

Reconstitution	Sterile PBS to a final concentration of 0.5 mg/mL.
Shipping	The product is shipped at ambient temperature. Upon receipt, store it immediately at the temperature recommended below. *Small pack size (-SP) is shipped with polar packs. Upon receipt, store it immediately at -20 to -70 °C
Stability & Storage	Use a manual defrost freezer and avoid repeated freeze-thaw cycles. <ul style="list-style-type: none"> ● 12 months from date of receipt, -20 to -70 °C as supplied. ● 1 month, 2 to 8 °C under sterile conditions after reconstitution. ● 6 months, -20 to -70 °C under sterile conditions after reconstitution.

BACKGROUND

Snapin (SNARE-associated protein) is an approximately 15 kDa, 136 amino acid vesicular phosphoprotein that contains a coiled-coil interacting domain. In neurons, it binds SNAP25 and RGS7 and regulates steps between synaptic vesicle docking and neurotransmitter release. In pancreatic β cells, it mediates incretin-stimulated insulin secretion. In germ cells, it binds PUM2 and Nanos1 as a putative adaptor protein. Human Snapin shares 98% aa sequence identity with mouse and rat Snapin, while mouse and rat Snapin share 100% aa sequence identity with each other.