

DESCRIPTION

Species Reactivity	Mouse
Specificity	Detects mouse EMMPRIN/CD147 in direct ELISAs.
Source	Recombinant Monoclonal Rabbit IgG Clone # 1159A
Purification	Protein A or G purified from cell culture supernatant
Immunogen	NS0 mouse myeloma cell line transfected with mouse EMMPRIN/CD147 Ala22-Pro209 Accession # P18572
Formulation	Lyophilized from a 0.2 µm filtered solution in PBS with Trehalose.

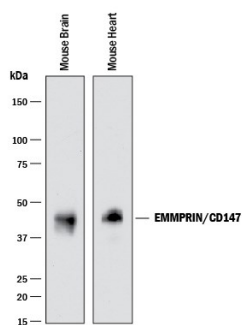
APPLICATIONS

Please Note: Optimal dilutions should be determined by each laboratory for each application. [General Protocols](#) are available in the Technical Information section on our website.

	Recommended Concentration	Sample
Western Blot	0.25 µg/mL	See Below
Flow Cytometry	0.25 µg/10 ⁶ cells	J774A.1 mouse reticulum cell sarcoma macrophage cell line
Immunohistochemistry	1-25 µg/mL	See Below

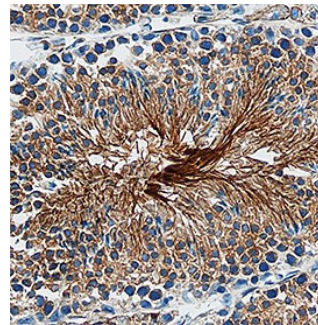
DATA

Western Blot



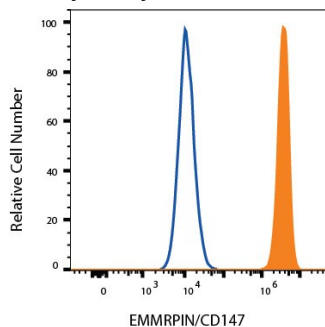
Detection of Mouse EMMPRIN/CD147 by Western Blot. Western blot shows lysates of mouse brain tissue and mouse heart tissue. PVDF membrane was probed with 0.25 µg/mL of Rabbit Anti-Mouse EMMPRIN/CD147 Monoclonal Antibody (Catalog # MAB7721) followed by HRP-conjugated Anti-Rabbit IgG Secondary Antibody (Catalog # HAF008). A specific band was detected for EMMPRIN/CD147 at approximately 42 kDa (as indicated). This experiment was conducted under reducing conditions and using Immunoblot Buffer Group 1.

Immunohistochemistry



EMMPRIN/CD147 in Mouse Testis. EMMPRIN/CD147 was detected in perfusion fixed frozen sections of mouse testis using Rabbit Anti-Mouse EMMPRIN/CD147 Monoclonal Antibody (Catalog # MAB7721) at 1 µg/mL overnight at 4 °C. Tissue was stained using the Anti-Rabbit HRP-DAB Cell & Tissue Staining Kit (brown; Catalog # CTS005) and counterstained with hematoxylin (blue). Specific staining was localized to spermatozoa. View our protocol for [Chromogenic IHC Staining of Frozen Tissue Sections](#).

Flow Cytometry



Detection of EMMPRIN/CD147 in J774A.1 cells by Flow Cytometry J774A.1 cells were stained with Rabbit Anti-Mouse EMMPRIN/CD147 Monoclonal Antibody (Catalog # MAB7721, filled histogram) or isotype control antibody (Catalog # MAB1050, open histogram) followed by Phycoerythrin-conjugated Anti-Rabbit IgG Secondary Antibody (Catalog # F0110). View our protocol for [Staining Membrane-associated Proteins](#).

PREPARATION AND STORAGE

Reconstitution Reconstitute at 0.5 mg/mL in sterile PBS.

Shipping The product is shipped at ambient temperature. Upon receipt, store it immediately at the temperature recommended below.

Stability & Storage **Use a manual defrost freezer and avoid repeated freeze-thaw cycles.**

- 12 months from date of receipt, -20 to -70 °C as supplied.
- 1 month, 2 to 8 °C under sterile conditions after reconstitution.
- 6 months, -20 to -70 °C under sterile conditions after reconstitution.

BACKGROUND

EMMPRIN, also known as basigin and CD147, is a type I membrane protein belonging to the immunoglobulin superfamily.