

DESCRIPTION

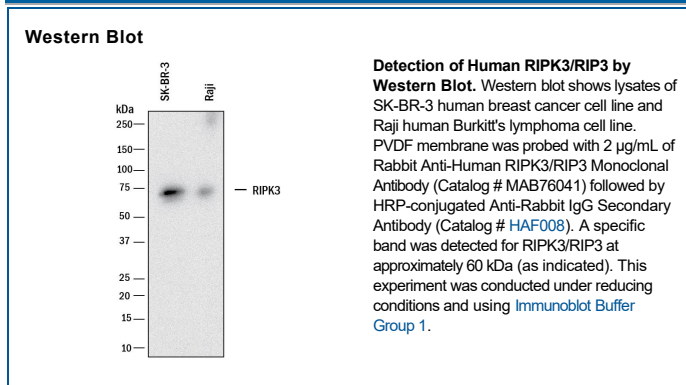
Species Reactivity	Human
Specificity	Detects human RIPK3/RIP3 in direct ELISAs.
Source	Recombinant Monoclonal Rabbit IgG Clone # 1312A
Purification	Protein A or G purified from cell culture supernatant
Immunogen	Synthetic peptide containing human RIPK3/RIP3 Accession # Q9Y572
Formulation	Lyophilized from a 0.2 µm filtered solution in PBS with Trehalose. See Certificate of Analysis for details. *Small pack size (-SP) is supplied either lyophilized or as a 0.2 µm filtered solution in PBS.

APPLICATIONS

Please Note: Optimal dilutions should be determined by each laboratory for each application. *General Protocols* are available in the *Technical Information* section on our website.

	Recommended Concentration	Sample
Western Blot	2 µg/mL	See Below

DATA



PREPARATION AND STORAGE

Reconstitution	Reconstitute at 0.5 mg/mL in sterile PBS.
Shipping	The product is shipped at ambient temperature. Upon receipt, store it immediately at the temperature recommended below. *Small pack size (-SP) is shipped with polar packs. Upon receipt, store it immediately at -20 to -70 °C
Stability & Storage	Use a manual defrost freezer and avoid repeated freeze-thaw cycles. <ul style="list-style-type: none"> • 12 months from date of receipt, -20 to -70 °C as supplied. • 1 month, 2 to 8 °C under sterile conditions after reconstitution. • 6 months, -20 to -70 °C under sterile conditions after reconstitution.

BACKGROUND

RIP3 (Receptor-Interacting Protein 3), also known as RIPK3, is a 518 amino acid (aa), 60 kDa phosphoprotein that contains an N-terminal protein kinase domain and a C-terminal interaction motif with which it binds RIP1. It converts cell response to TNF-α from apoptosis (RIP1 via Fas) to programmed necrosis (RIP1/RIP3) by inducing reactive oxygen species production. Human RIP3 (aa 1-218) shares approximately 74% aa sequence identity with mouse and rat RIP3. Alternately spliced human b (252 aa) and g (231 aa) isoforms diverge after aa 219 and 221, respectively, and are found to antagonize RIP3.