

**DESCRIPTION**

<b>Species Reactivity</b>	Human
<b>Specificity</b>	Detects human TGIF1 in direct ELISAs.
<b>Source</b>	Monoclonal Mouse IgG <sub>2A</sub> Clone # 790715
<b>Purification</b>	Protein A or G purified from hybridoma culture supernatant
<b>Immunogen</b>	<i>E. coli</i> -derived recombinant human TGIF1 Lys245-Ser359 Accession # Q15583
<b>Formulation</b>	Lyophilized from a 0.2 µm filtered solution in PBS with Trehalose. See Certificate of Analysis for details. *Small pack size (-SP) is supplied either lyophilized or as a 0.2 µm filtered solution in PBS.

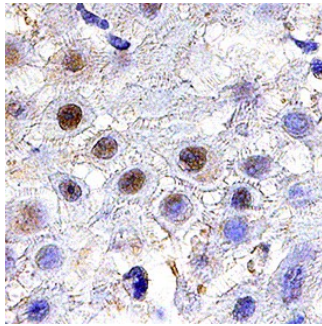
**APPLICATIONS**

**Please Note:** Optimal dilutions should be determined by each laboratory for each application. *General Protocols* are available in the *Technical Information* section on our website.

	<b>Recommended Concentration</b>	<b>Sample</b>
<b>Immunohistochemistry</b>	8-25 µg/mL	See Below

**DATA**

**Immunohistochemistry**



**TGIF1 in Human Squamous Cell Carcinoma.** TGIF1 was detected in immersion fixed paraffin-embedded sections of human squamous cell carcinoma using Mouse Anti-Human TGIF1 Monoclonal Antibody (Catalog # MAB75551) at 25 µg/mL overnight at 4 °C. Tissue was stained using the Anti-Mouse HRP-DAB Cell & Tissue Staining Kit (brown; Catalog # CTS002) and counterstained with hematoxylin (blue). Specific staining was localized to nuclei. View our protocol for [Chromogenic IHC Staining of Paraffin-embedded Tissue Sections](#).

**PREPARATION AND STORAGE**

<b>Reconstitution</b>	Reconstitute at 0.5 mg/mL in sterile PBS.
<b>Shipping</b>	The product is shipped at ambient temperature. Upon receipt, store it immediately at the temperature recommended below. *Small pack size (-SP) is shipped with polar packs. Upon receipt, store it immediately at -20 to -70 °C
<b>Stability &amp; Storage</b>	<b>Use a manual defrost freezer and avoid repeated freeze-thaw cycles.</b> <ul style="list-style-type: none"> <li>● 12 months from date of receipt, -20 to -70 °C as supplied.</li> <li>● 1 month, 2 to 8 °C under sterile conditions after reconstitution.</li> <li>● 6 months, -20 to -70 °C under sterile conditions after reconstitution.</li> </ul>

**BACKGROUND**

TGIF1 (5'-TG[TCA]-3' Interacting Protein 1) also known as Transforming Growth Factor beta-induced Factor 1 and HPE4, is a 43 kDa (predicted) member of the TALE/TGIF homeobox family of proteins. It is widely expressed, and serves as a transcriptional corepressor for SMAD2-induced gene activation. Evidence suggests that it either complexes with c-jun and cPML, or interacts with HDAC in the nucleus to perform this function. It also binds to RXR response elements, blocking RXR-mediated gene activation. Such interactions are of considerable importance during fetal and neonatal development. Human TGIF1 is 401 amino acids (aa) in length. It contains a DNA-binding homeobox domain (aa 164-226) and two consecutive repressor domains (aa 267-401). There are multiple splice variants. One is very well characterized, is 33-35 kDa in size, and shows a four aa substitution for aa 1-133. This is most active when phosphorylated, which adds approximately 2-4 kDa to its SDS-PAGE MW. Two other splice forms contain a 19 aa substitution for aa 1-134, and utilize an alternative start site at Met150, respectively. Over aa 245-359, human TGIF1 shares 81% aa sequence identity with mouse TGIF1.