

DESCRIPTION

Species Reactivity	Mouse
Specificity	Detects mouse Endosialin/CD248 in direct ELISAs. In direct ELISAs, less than 10% cross-reactivity with recombinant human Endosialin/CD248 is observed.
Source	Monoclonal Rat IgG _{2A} Clone # 458606
Purification	Protein A or G purified from hybridoma culture supernatant
Immunogen	Mouse myeloma cell line NS0-derived recombinant mouse Endosialin/CD248 Val13-Arg693 (predicted) Accession # Q91V98
Formulation	Lyophilized from a 0.2 µm filtered solution in PBS with Trehalose. See Certificate of Analysis for details. *Small pack size (-SP) is supplied either lyophilized or as a 0.2 µm filtered solution in PBS.

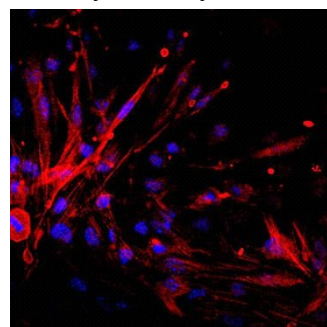
APPLICATIONS

Please Note: Optimal dilutions should be determined by each laboratory for each application. [General Protocols](#) are available in the Technical Information section on our website.

	Recommended Concentration	Sample
Immunocytochemistry	8-25 µg/mL	See Below

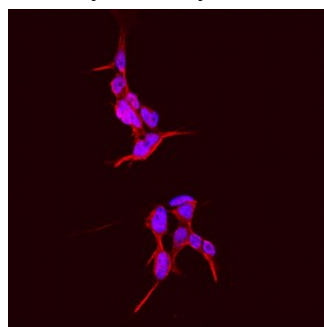
DATA

Immunocytochemistry



Endosialin/CD248 in bEnd.3 Mouse Cell Line. Endosialin/CD248 was detected in immersion fixed bEnd.3 mouse endothelioma cell line using Rat Anti-Mouse Endosialin/CD248 Monoclonal Antibody (Catalog # MAB7535) at 10 µg/mL for 3 hours at room temperature. Cells were stained using the NorthernLights™ 557-conjugated Anti-Rat IgG Secondary Antibody (red; Catalog # NL013) and counterstained with DAPI (blue). Specific staining was localized to cell surfaces and cytoplasm. View our protocol for [Fluorescent ICC Staining of Cells on Coverslips](#).

Immunocytochemistry



Endosialin/CD248 in IMR-32 Human Cell Line. Endosialin/CD248 was detected in immersion fixed IMR-32 human neuroblastoma cell line using Rat Anti-Mouse Endosialin/CD248 Monoclonal Antibody (Catalog # MAB7535) at 10 µg/mL for 3 hours at room temperature. Cells were stained using the NorthernLights™ 557-conjugated Anti-Rat IgG Secondary Antibody (red; Catalog # NL013) and counterstained with DAPI (blue). Specific staining was localized to cell surfaces and cytoplasm. View our protocol for [Fluorescent ICC Staining of Cells on Coverslips](#).

PREPARATION AND STORAGE

Reconstitution	Sterile PBS to a final concentration of 0.5 mg/mL.
Shipping	The product is shipped at ambient temperature. Upon receipt, store it immediately at the temperature recommended below. *Small pack size (-SP) is shipped with polar packs. Upon receipt, store it immediately at -20 to -70 °C
Stability & Storage	Use a manual defrost freezer and avoid repeated freeze-thaw cycles. <ul style="list-style-type: none"> 12 months from date of receipt, -20 to -70 °C as supplied. 1 month, 2 to 8 °C under sterile conditions after reconstitution. 6 months, -20 to -70 °C under sterile conditions after reconstitution.

BACKGROUND

Endosialin, also known as CD248 and tumor endothelial marker 1 (Tem1), is a 165 kDa transmembrane O-glycosylated protein that contains one C-type lectin, one Sushi, one EGF-like domain and a mucin-like stalk in its extracellular domain (ECD). It is expressed on activated perivascular and stromal cells in embryonic and tumor neovasculature but is downregulated in quiescent vasculature. Endosialin regulates pericyte proliferation, migration, and adhesion to matrix Fibronectin and Collagens I and IV. It is also required for lymph node and spleen remodeling during immune responses. Within the ECD, mouse Endosialin shares 76% and 93% aa sequence identity with human and rat Endosialin, respectively.