

## DESCRIPTION

<b>Species Reactivity</b>	Human
<b>Specificity</b>	Detects human S1P <sub>3</sub> /EDG-3 in direct ELISAs.
<b>Source</b>	Monoclonal Mouse IgG <sub>2A</sub> Clone # 776807
<b>Purification</b>	Protein A or G purified from hybridoma culture supernatant
<b>Immunogen</b>	NS0 mouse myeloma cell line transfected with human S1P <sub>3</sub> /EDG-3 Accession # Q99500
<b>Formulation</b>	Lyophilized from a 0.2 µm filtered solution in PBS with Trehalose. See Certificate of Analysis for details. *Small pack size (-SP) is supplied as a 0.2 µm filtered solution in PBS.

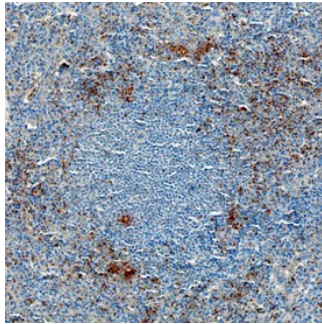
## APPLICATIONS

**Please Note:** Optimal dilutions should be determined by each laboratory for each application. *General Protocols* are available in the *Technical Information* section on our website.

	<b>Recommended Concentration</b>	<b>Sample</b>
<b>Immunohistochemistry</b>	8-25 µg/mL	See Below

## DATA

### Immunohistochemistry



**S1P<sub>3</sub>/EDG-3 in Human Spleen.** S1P<sub>3</sub>/EDG-3 was detected in immersion fixed paraffin-embedded sections of human spleen using Mouse Anti-Human S1P<sub>3</sub>/EDG-3 Monoclonal Antibody (Catalog # MAB75241) at 15 µg/mL overnight at 4 °C. Before incubation with the primary antibody, tissue was subjected to heat-induced epitope retrieval using Antigen Retrieval Reagent-Basic (Catalog # CTS013). Tissue was stained using the Anti-Mouse HRP-DAB Cell & Tissue Staining Kit (brown; Catalog # CTS002) and counterstained with hematoxylin (blue). Specific staining was localized to the marginal zone of germinal centers. View our protocol for [Chromogenic IHC Staining of Paraffin-embedded Tissue Sections](#).

## PREPARATION AND STORAGE

<b>Reconstitution</b>	Sterile PBS to a final concentration of 0.5 mg/mL.
<b>Shipping</b>	The product is shipped at ambient temperature. Upon receipt, store it immediately at the temperature recommended below. *Small pack size (-SP) is shipped with polar packs. Upon receipt, store it immediately at -20 to -70 °C
<b>Stability &amp; Storage</b>	<b>Use a manual defrost freezer and avoid repeated freeze-thaw cycles.</b> <ul style="list-style-type: none"> <li>● 12 months from date of receipt, -20 to -70 °C as supplied.</li> <li>● 1 month, 2 to 8 °C under sterile conditions after reconstitution.</li> <li>● 6 months, -20 to -70 °C under sterile conditions after reconstitution.</li> </ul>

## BACKGROUND

EDG-3, also known as sphingosine 1-phosphate receptor-3 (S1P3), is a 378 amino acid (aa) seven-transmembrane receptor for the lysolipid phosphoric acid mediator, sphingosine 1-phosphate (S1P). EDG-3 interactions with S1P induce a range of responses including vasoconstriction, brachycardia, vascular endothelial and smooth muscle cell proliferation and migration, heart and liver fibrosis, and coagulation-induced inflammation. Extracellular portions of human EDG-3 show 74% aa identity with mouse and rat EDG-3.