

DESCRIPTION

| | |
|---------------------------|---|
| Species Reactivity | Human |
| Specificity | Detects human Orexin B/Hypocretin-2 in direct ELISAs. In direct ELISAs, no cross-reactivity with recombinant human Orexin A is observed. |
| Source | Monoclonal Mouse IgG ₁ Clone # 145202 |
| Purification | Protein A or G purified from hybridoma culture supernatant |
| Immunogen | KLH-conjugated human Orexin B/Hypocretin-2 synthetic peptide Accession # O43612 |
| Formulation | Lyophilized from a 0.2 µm filtered solution in PBS with Trehalose. See Certificate of Analysis for details. *Small pack size (-SP) is supplied as a 0.2 µm filtered solution in PBS. |

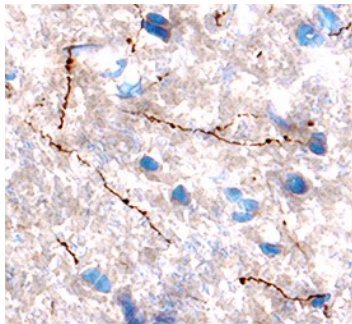
APPLICATIONS

Please Note: Optimal dilutions should be determined by each laboratory for each application. [General Protocols](#) are available in the [Technical Information](#) section on our website.

| | Recommended Concentration | Sample |
|-----------------------------|---------------------------|-----------|
| Immunohistochemistry | 8-25 µg/mL | See Below |

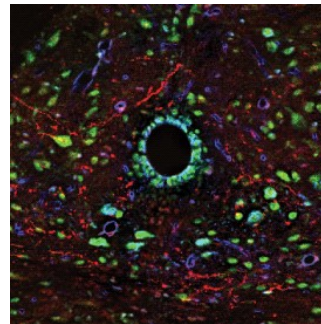
DATA

Immunohistochemistry



Orexin B in Mouse Hypothalamus.
Orexin B was detected in perfusion fixed frozen sections of mouse brain (hypothalamus) using Mouse Anti-Human Orexin B Monoclonal Antibody (Catalog # MAB734) at 8 µg/mL overnight at 4 °C. Tissue was stained using the Anti-Mouse HRP-DAB Cell & Tissue Staining Kit (brown; Catalog # CTS002) and counterstained with hematoxylin (blue). Specific labeling was localized to the neuronal processes and synaptic boutons. View our protocol for [Chromogenic IHC Staining of Frozen Tissue Sections](#).

Immunohistochemistry



Orexin B, p38α, & Integrin beta 1 in Mouse Brainstem. Orexin B, p38α, and Integrin β 1 were detected in perfusion fixed frozen sections of mouse brainstem using Mouse Anti-Human Orexin B Monoclonal Antibody (red; Catalog # MAB734), Anti-Human/Mouse/Rat p38α Antigen Affinity-purified Polyclonal Antibody (green; Catalog # AF8691), and Anti-Mouse Integrin β 1 Antigen Affinity-purified Polyclonal Antibody (blue; Catalog # AF2405). Tissue was incubated with primary antibodies overnight at 4 °C. Tissue was stained using NorthernLights™ 493-conjugated Anti-Rabbit IgG Secondary Antibody (green; Catalog # NL006), NorthernLights 557-conjugated Anti-Mouse IgG Secondary Antibody (red; Catalog # NL007), and NorthernLights 637-conjugated Anti-Goat IgG Secondary Antibody (blue; Catalog # NL002). The image of Integrin beta 1 is pseudo-colored for presentation. View our protocol for [Fluorescent IHC Staining of Frozen Tissue Sections](#).

PREPARATION AND STORAGE

| | |
|--------------------------------|--|
| Reconstitution | Reconstitute at 0.5 mg/mL in sterile PBS. |
| Shipping | The product is shipped at ambient temperature. Upon receipt, store it immediately at the temperature recommended below. *Small pack size (-SP) is shipped with polar packs. Upon receipt, store it immediately at -20 to -70 °C |
| Stability & Storage | Use a manual defrost freezer and avoid repeated freeze-thaw cycles. <ul style="list-style-type: none"> ● 12 months from date of receipt, -20 to -70 °C as supplied. ● 1 month, 2 to 8 °C under sterile conditions after reconstitution. ● 6 months, -20 to -70 °C under sterile conditions after reconstitution. |

BACKGROUND

Orexin A and Orexin B are neuropeptide hormones derived from proteolytic processing of the Orexin precursor protein (Accession # O43612). Orexins are released from the hypothalamus and are involved in the regulation of sleeping patterns, feeding, and metabolism.