

**DESCRIPTION**

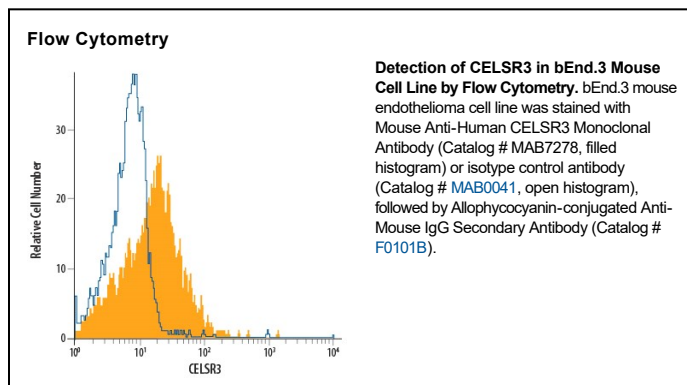
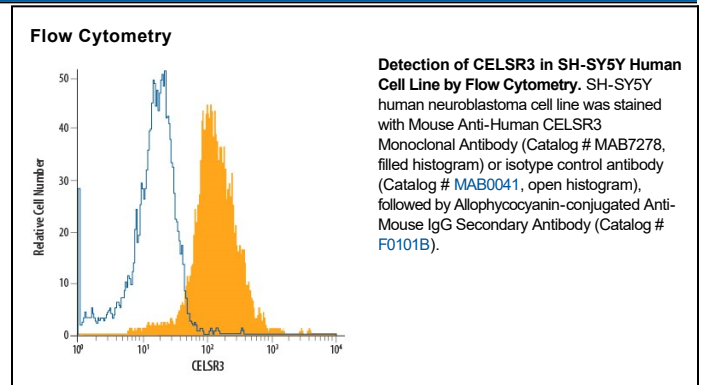
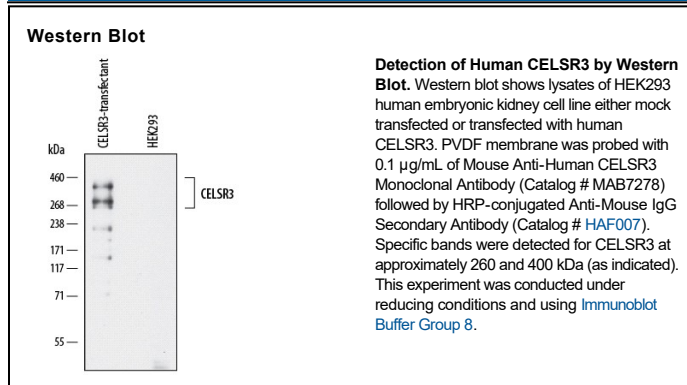
<b>Species Reactivity</b>	Human
<b>Specificity</b>	Detects human CELSR3 in ELISA.
<b>Source</b>	Monoclonal Mouse IgG <sub>2B</sub> Clone # 763103
<b>Purification</b>	Protein A or G purified from hybridoma culture supernatant
<b>Immunogen</b>	<i>E. coli</i> -derived recombinant human CELSR3 Val531-Ser711 Accession # Q9NYQ7
<b>Formulation</b>	Lyophilized from a 0.2 µm filtered solution in PBS with Trehalose. See Certificate of Analysis for details. *Small pack size (-SP) is supplied either lyophilized or as a 0.2 µm filtered solution in PBS.

**APPLICATIONS**

Please Note: Optimal dilutions should be determined by each laboratory for each application. General Protocols are available in the Technical Information section on our website.

	<b>Recommended Concentration</b>	<b>Sample</b>
<b>Western Blot</b>	0.1 µg/mL	See Below
<b>Flow Cytometry</b>	2.5 µg/10 <sup>6</sup> cells	See Below
<b>CyTOF-ready</b>	Ready to be labeled using established conjugation methods. No BSA or other carrier proteins that could interfere with conjugation.	

**DATA**



**PREPARATION AND STORAGE**

<b>Reconstitution</b>	Reconstitute at 0.5 mg/mL in sterile PBS.
<b>Shipping</b>	The product is shipped at ambient temperature. Upon receipt, store it immediately at the temperature recommended below. *Small pack size (-SP) is shipped with polar packs. Upon receipt, store it immediately at -20 to -70 °C
<b>Stability &amp; Storage</b>	<b>Use a manual defrost freezer and avoid repeated freeze-thaw cycles.</b> <ul style="list-style-type: none"> <li>• 12 months from date of receipt, -20 to -70 °C as supplied.</li> <li>• 1 month, 2 to 8 °C under sterile conditions after reconstitution.</li> <li>• 6 months, -20 to -70 °C under sterile conditions after reconstitution.</li> </ul>

**BACKGROUND**

CELSR3 (Cadherin EGF LAG Seven-pass G-type Receptor 3; also cadherin family member 11/CDHF11, FMI1 and EGFL1) is a 355 kDa (predicted) member of the LN-7TM subfamily, GPCR 2 family of proteins. It is coexpressed with Fzd3 on postmigratory neurons of the developing DRG and cranial ganglia, and appears to serve as an axonal guidance cue. Mature human CELSR3 is 3280 amino acids (aa) in length (aa 33-3312). It is a highly complex 7-transmembrane protein that contains a 2508 aa extended N-terminal extracellular region (aa 33-2540) plus a 538 aa C-terminal cytoplasmic domain. The N-terminal region contains nine consecutive cadherin domains (aa 326-1265), followed by a mixture of eight EGF-like and three laminin-like domains, and one membrane-proximal GPS domain. There are two potential isoform variants. One shows a five aa insertion after Gly2158, while another possesses an alternative start site at Met276. Over aa 531-711, human CELSR3 shares 98% aa sequence identity with mouse CELSR3.