

DESCRIPTION

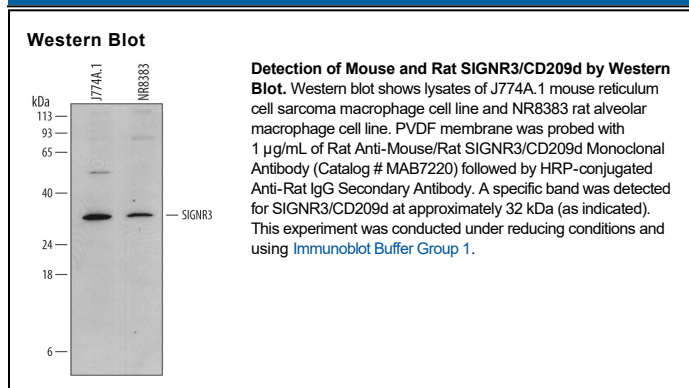
| | |
|---------------------------|--|
| Species Reactivity | Mouse/Rat |
| Specificity | Detects mouse and rat SIGNR3/CD209d in Western blots. In Western blots, 100% cross-reactivity with recombinant mouse (rm) SIGNR1, 50% cross-reactivity with rmSIGNR7, and no cross-reactivity with rmSIGNR4 is observed. In direct ELISAs, no cross-reactivity with recombinant human (rh) DC-SIGN, rhDC-SIGNR, rmSIGNR1, rmSIGNR4, or rmSIGNR7 is observed. |
| Source | Monoclonal Rat IgG _{2A} Clone # 728804 |
| Purification | Protein A or G purified from hybridoma culture supernatant |
| Immunogen | Mouse myeloma cell line NS0-derived recombinant mouse SIGNR3/CD209d Glu82-Lys237 Accession # Q91ZW8 |
| Formulation | Lyophilized from a 0.2 µm filtered solution in PBS with Trehalose. See Certificate of Analysis for details. *Small pack size (-SP) is supplied either lyophilized or as a 0.2 µm filtered solution in PBS. |

APPLICATIONS

Please Note: Optimal dilutions should be determined by each laboratory for each application. [General Protocols](#) are available in the Technical Information section on our website.

| | Recommended Concentration | Sample |
|---------------------|----------------------------------|---------------|
| Western Blot | 1 µg/mL | See Below |

DATA



PREPARATION AND STORAGE

| | |
|--------------------------------|--|
| Reconstitution | Sterile PBS to a final concentration of 0.5 mg/mL. |
| Shipping | The product is shipped at ambient temperature. Upon receipt, store it immediately at the temperature recommended below. *Small pack size (-SP) is shipped with polar packs. Upon receipt, store it immediately at -20 to -70 °C |
| Stability & Storage | Use a manual defrost freezer and avoid repeated freeze-thaw cycles. <ul style="list-style-type: none"> 12 months from date of receipt, -20 to -70 °C as supplied. 1 month, 2 to 8 °C under sterile conditions after reconstitution. 6 months, -20 to -70 °C under sterile conditions after reconstitution. |

BACKGROUND

SIGNR3 (designated CD209d) is a 237 amino acid (aa), ~34 kDa type II transmembrane glycoprotein that is one of several mouse orthologs of human DC-SIGN (CD209). SIGNR3 is a calcium-binding C-type lectin that is expressed on myeloid mononuclear cells and a subpopulation of dendritic cells in the dermis, blood, and most lymphoid organs. Like human DC-SIGN, SIGNR3 recognizes high-mannose and fucose-terminated glycans and protects against pathogens such as *Candida albicans* and *Mycobacterium tuberculosis*. Within the region used as an immunogen, mouse and rat SIGNR3 share 91% aa sequence identity. A 207 aa isoform lacks aa 45-74, which includes the transmembrane domain.