

**DESCRIPTION**

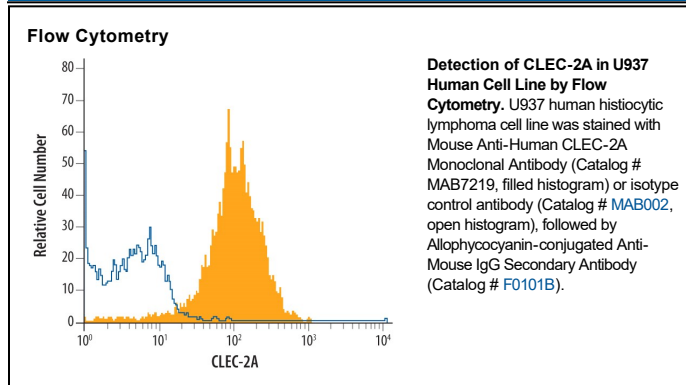
<b>Species Reactivity</b>	Human
<b>Specificity</b>	Detects human CLEC-2A in direct ELISAs. In direct ELISAs, no cross-reactivity with recombinant human (rh) CLEC-2D, rhCLEC-2, or rhCD69 is observed.
<b>Source</b>	Monoclonal Mouse IgG <sub>1</sub> Clone # 705518
<b>Purification</b>	Protein A or G purified from hybridoma culture supernatant
<b>Immunogen</b>	Mouse myeloma cell line NS0-derived recombinant human CLEC-2A Trp49-Leu174 (predicted) Accession # Q6UVW9
<b>Formulation</b>	Lyophilized from a 0.2 µm filtered solution in PBS with Trehalose. See Certificate of Analysis for details. *Small pack size (-SP) is supplied either lyophilized or as a 0.2 µm filtered solution in PBS.

**APPLICATIONS**

**Please Note:** Optimal dilutions should be determined by each laboratory for each application. *General Protocols* are available in the *Technical Information* section on our website.

	<b>Recommended Concentration</b>	<b>Sample</b>
<b>Flow Cytometry</b>	2.5 µg/10 <sup>6</sup> cells	See Below
<b>CyTOF-ready</b>	Ready to be labeled using established conjugation methods. No BSA or other carrier proteins that could interfere with conjugation.	

**DATA**



**PREPARATION AND STORAGE**

<b>Reconstitution</b>	Sterile PBS to a final concentration of 0.5 mg/mL.
<b>Shipping</b>	The product is shipped at ambient temperature. Upon receipt, store it immediately at the temperature recommended below. *Small pack size (-SP) is shipped with polar packs. Upon receipt, store it immediately at -20 to -70 °C
<b>Stability &amp; Storage</b>	<b>Use a manual defrost freezer and avoid repeated freeze-thaw cycles.</b> <ul style="list-style-type: none"> <li>● 12 months from date of receipt, -20 to -70 °C as supplied.</li> <li>● 1 month, 2 to 8 °C under sterile conditions after reconstitution.</li> <li>● 6 months, -20 to -70 °C under sterile conditions after reconstitution.</li> </ul>

**BACKGROUND**

CLEC-2A (C-type lectin domain family 2 member A), also known as PILAR and KACL, is an approximately 35 kDa type II transmembrane glycoprotein in the C-type lectin superfamily. It contains one C-type lectin domain in its extracellular region. Alternate splicing of human CLEC-2A generates an additional isoform with a substitution of 37 amino acids (aa) at the C-terminus. CLEC-2A is upregulated on antigen-activated CD8<sup>+</sup> T cells and enhances T cell proliferation through interactions with CD161. It is also expressed on keratinocytes and binds to NKp65/KLRF2, triggering NK cell activation.