

DESCRIPTION

Species Reactivity	Human
Specificity	Detects human Cerebellin-2 in direct ELISAs. In direct ELISAs, 100% cross-reactivity with recombinant human (rh) Cerebellin-1 and rhCerebellin-4 is observed, and approximately 50% cross-reactivity with rhCerebellin-3 is observed.
Source	Monoclonal Mouse IgG ₁ Clone # 704323
Purification	Protein A or G purified from hybridoma culture supernatant
Immunogen	Chinese hamster ovary cell line CHO-derived recombinant human Cerebellin-2 Arg50-Leu224 Accession # Q81UK8
Formulation	Lyophilized from a 0.2 µm filtered solution in PBS with Trehalose. See Certificate of Analysis for details. *Small pack size (-SP) is supplied as a 0.2 µm filtered solution in PBS.

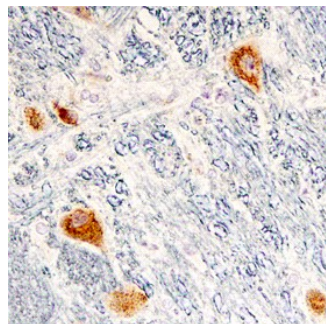
APPLICATIONS

Please Note: Optimal dilutions should be determined by each laboratory for each application. [General Protocols](#) are available in the [Technical Information](#) section on our website.

	Recommended Concentration	Sample
Immunohistochemistry	8-25 µg/mL	See Below

DATA

Immunohistochemistry



Cerebellin-2 in Human Brain. Cerebellin-2 was detected in immersion fixed paraffin-embedded sections of human brain (medulla) using Mouse Anti-Human Cerebellin-2 Monoclonal Antibody (Catalog # MAB70441) at 15 µg/mL overnight at 4 °C. Tissue was stained using the Anti-Mouse HRP-DAB Cell & Tissue Staining Kit (brown; Catalog # CTS002) and counterstained with hematoxylin (blue). Specific staining was localized to neuronal cell bodies. View our protocol for [Chromogenic IHC Staining of Paraffin-embedded Tissue Sections](#).

PREPARATION AND STORAGE

Reconstitution	Sterile PBS to a final concentration of 0.5 mg/mL.
Shipping	The product is shipped at ambient temperature. Upon receipt, store it immediately at the temperature recommended below. *Small pack size (-SP) is shipped with polar packs. Upon receipt, store it immediately at -20 to -70 °C
Stability & Storage	Use a manual defrost freezer and avoid repeated freeze-thaw cycles. <ul style="list-style-type: none"> ● 12 months from date of receipt, -20 to -70 °C as supplied. ● 1 month, 2 to 8 °C under sterile conditions after reconstitution. ● 6 months, -20 to -70 °C under sterile conditions after reconstitution.

BACKGROUND

Cerebellin-2 (CBLN2) is an approximately 25 kDa glycoprotein in the Cerebellin family of C1q- and TNF-related proteins. It contains a potential membrane-associating segment but may also be secreted. It contains one C1q-like domain in its extracellular region. Cerebellin-2 expression is developmentally regulated in the cerebellum, neocortex, sensory neurons of the dorsal root ganglion and spinal cord, and adrenal cortex. It associates with Cerebellin-1 which is involved in the formation and maintenance of synapses in the cerebellum. Within the ectodomain (aa 50-224), Human Cerebellin-2 shares 99% aa sequence identity with mouse and rat Cerebellin-2.