

DESCRIPTION

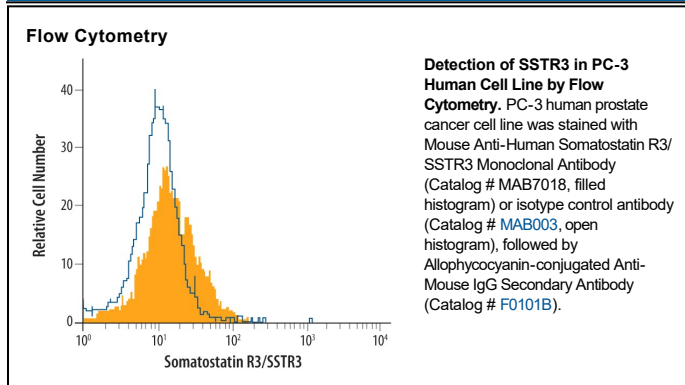
Species Reactivity	Human
Specificity	Detects human Somatostatin R3/SSTR3
Source	Monoclonal Mouse IgG _{2A} Clone # 576017
Purification	Protein A or G purified from hybridoma culture supernatant
Immunogen	NS0 mouse myeloma cell line transfected with human Somatostatin R3/SSTR3 Accession # P32745
Formulation	Lyophilized from a 0.2 µm filtered solution in PBS with Trehalose. See Certificate of Analysis for details. *Small pack size (-SP) is supplied either lyophilized or as a 0.2 µm filtered solution in PBS.

APPLICATIONS

Please Note: Optimal dilutions should be determined by each laboratory for each application. *General Protocols* are available in the *Technical Information* section on our website.

	Recommended Concentration	Sample
Flow Cytometry	2.5 µg/10 ⁶ cells	See Below
CyTOF-ready	Ready to be labeled using established conjugation methods. No BSA or other carrier proteins that could interfere with conjugation.	

DATA



PREPARATION AND STORAGE

Reconstitution	Sterile PBS to a final concentration of 0.5 mg/mL.
Shipping	The product is shipped at ambient temperature. Upon receipt, store it immediately at the temperature recommended below. *Small pack size (-SP) is shipped with polar packs. Upon receipt, store it immediately at -20 to -70 °C
Stability & Storage	Use a manual defrost freezer and avoid repeated freeze-thaw cycles. <ul style="list-style-type: none"> • 12 months from date of receipt, -20 to -70 °C as supplied. • 1 month, 2 to 8 °C under sterile conditions after reconstitution. • 6 months, -20 to -70 °C under sterile conditions after reconstitution.

BACKGROUND

Somatostatin Receptor 3 (SSTR3) is one of five 7-transmembrane G-protein-coupled receptors for somatostatins 14 and 28. Human SSTR3 shares 80% aa identity with mouse SSTR3 within the extracellular domains. SSTR3 protein has been detected in anterior pituitary, lymphocytes, thyroid, parathyroid, stomach, small intestine, and pancreatic islets. In neurons, it is located within cilia and is implicated in object recognition memory. It is an inhibitory receptor that transduces the antiproliferative and antisecretory effects of somatostatins in the pituitary.