

## DESCRIPTION

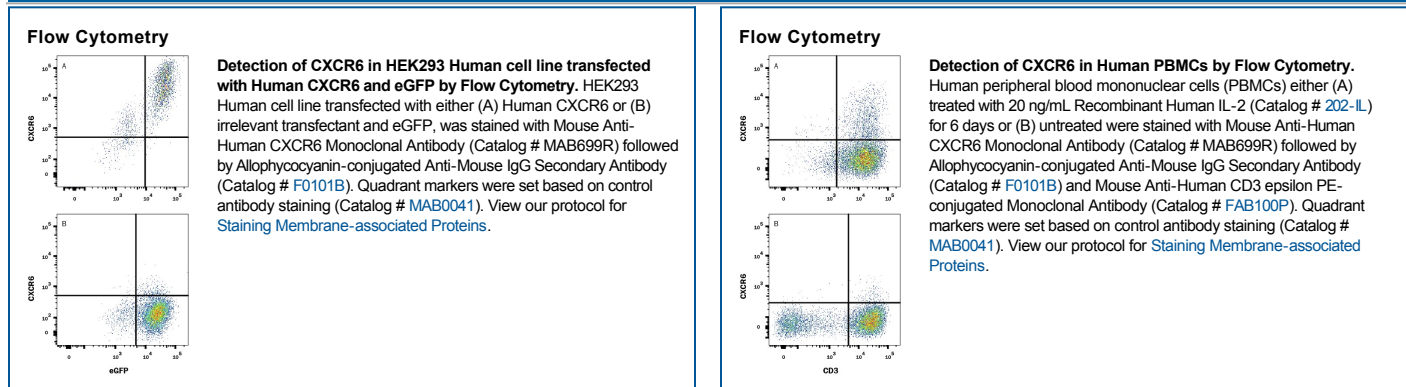
|                           |   |
|---------------------------|---|
| <b>Species Reactivity</b> | Human   |
| <b>Specificity</b>        | Detects human CXCR6 in direct ELISAs.   |
| <b>Source</b>             | Recombinant Monoclonal Mouse IgG <sub>2B</sub> Clone # 56811R   |
| <b>Purification</b>       | Protein A or G purified from cell culture supernatant   |
| <b>Immunogen</b>          | NS0 mouse myeloma cell line transfected with human CXCR6<br>Met1-Leu342<br>Accession # O00574   |
| <b>Formulation</b>        | Lyophilized from a 0.2 µm filtered solution in PBS with Trehalose. See Certificate of Analysis for details.<br>*Small pack size (-SP) is supplied either lyophilized or as a 0.2 µm filtered solution in PBS. |

## APPLICATIONS

**Please Note:** Optimal dilutions should be determined by each laboratory for each application. *General Protocols* are available in the *Technical Information* section on our website.

|                       | <b>Recommended Concentration</b>   | <b>Sample</b> |
|-----------------------|--|---------------|
| <b>Flow Cytometry</b> | 0.25 µg/10 <sup>6</sup> cells  | See Below     |
| <b>CytoF-ready</b>    | Ready to be labeled using established conjugation methods. No BSA or other carrier proteins that could interfere with conjugation. |               |

## DATA



## PREPARATION AND STORAGE

|                                |   |
|--------------------------------|---|
| <b>Reconstitution</b>          | Reconstitute at 0.5 mg/mL in sterile PBS.   |
| <b>Shipping</b>                | The product is shipped at ambient temperature. Upon receipt, store it immediately at the temperature recommended below.<br>*Small pack size (-SP) is shipped with polar packs. Upon receipt, store it immediately at -20 to -70 °C  |
| <b>Stability &amp; Storage</b> | <p><b>Use a manual defrost freezer and avoid repeated freeze-thaw cycles.</b></p> <ul style="list-style-type: none"> <li>● 12 months from date of receipt, -20 to -70 °C as supplied.</li> <li>● 1 month, 2 to 8 °C under sterile conditions after reconstitution.</li> <li>● 6 months, -20 to -70 °C under sterile conditions after reconstitution.</li> </ul> |

## BACKGROUND

CXCR6, also known as Bonzo and STRL33, is a G protein coupled chemokine receptor expressed on activated T cells and tumor-infiltrating lymphocytes. It binds soluble CXCL16 and membrane-anchored CXCL16 expressed on dendritic cells and macrophages.