

DESCRIPTION

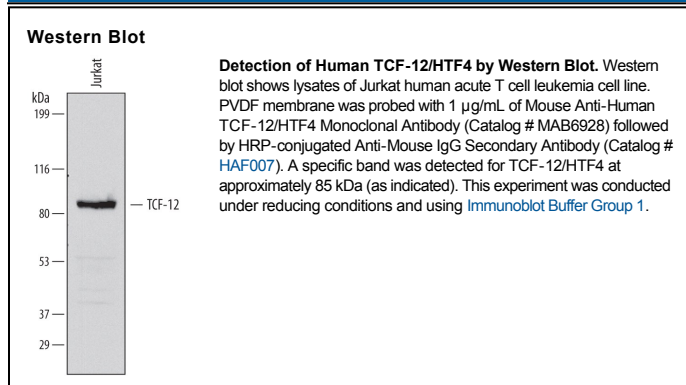
Species Reactivity	Human
Specificity	Detects human TCF-12/HTF4 in direct ELISAs and Western blots. In Western blots, no cross-reactivity with recombinant human TCF1, -2, -3, or -5 is observed.
Source	Monoclonal Mouse IgG _{2B} Clone # 690124
Purification	IgM-specific Affinity-purified from hybridoma culture supernatant
Immunogen	<i>E. coli</i> -derived recombinant human TCF-12/HTF4 Met108-Glu521 Accession # Q99081
Formulation	Lyophilized from a 0.2 µm filtered solution in PBS with Trehalose. See Certificate of Analysis for details. *Small pack size (-SP) is supplied as a 0.2 µm filtered solution in PBS.

APPLICATIONS

Please Note: Optimal dilutions should be determined by each laboratory for each application. *General Protocols* are available in the *Technical Information* section on our website.

	Recommended Concentration	Sample
Western Blot	1 µg/mL	See Below

DATA



PREPARATION AND STORAGE

Reconstitution	Sterile PBS to a final concentration of 0.5 mg/mL.
Shipping	The product is shipped at ambient temperature. Upon receipt, store it immediately at the temperature recommended below. *Small pack size (-SP) is shipped with polar packs. Upon receipt, store it immediately at -20 to -70 °C
Stability & Storage	Use a manual defrost freezer and avoid repeated freeze-thaw cycles. <ul style="list-style-type: none"> ● 12 months from date of receipt, -20 to -70 °C as supplied. ● 1 month, 2 to 8 °C under sterile conditions after reconstitution. ● 6 months, -20 to -70 °C under sterile conditions after reconstitution.

BACKGROUND

TCF-12 (transcription factor 12), also called HTF4, bHLHb20 and HEB, is a 682 amino acid (aa) DNA binding protein of the E protein family of helix-loop-helix (HLH) transcription factors. E proteins, including TCF-12 and E2A, mediate lymphocyte differentiation and also function in neurogenesis. Homo-oligomerization is required for activity; hetero-oligomers are also formed. The region of human TCF-12 used as an immunogen excludes the HLH domain and shares 94% aa sequence identity with mouse and rat TCF-12. Potential isoforms of 706 and 648 aa contain an insertion of 24 aa after aa 396, while isoforms of 648, 624 and 512 aa show alternate N-terminal sequences that merge with the 682 aa form at aa 75, 75 and 194, respectively.