

**DESCRIPTION**

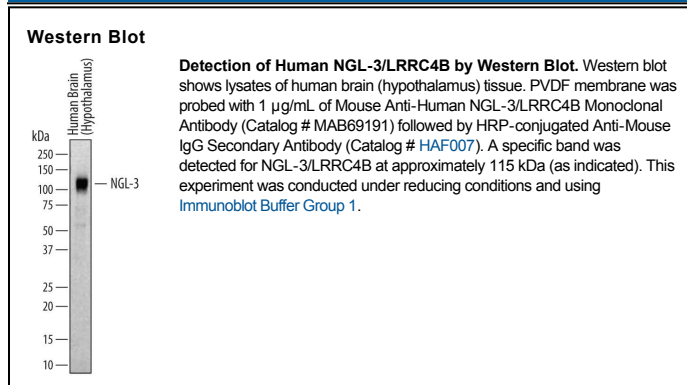
<b>Species Reactivity</b>	Human
<b>Specificity</b>	Detects human NGL-3/LRRC4B in direct ELISAs and Western blots. In direct ELISAs and Western blots, no cross-reactivity with recombinant human (rh) LRRC3, rhLRRC4, or rhLRRC32 is observed.
<b>Source</b>	Monoclonal Mouse IgG <sub>2A</sub> Clone # 702008
<b>Purification</b>	Protein A or G purified from hybridoma culture supernatant
<b>Immunogen</b>	Chinese hamster ovary cell line CHO-derived recombinant human NGL-3/LRRC4B Ala47-Lys576 Accession # Q9NT99
<b>Formulation</b>	Lyophilized from a 0.2 µm filtered solution in PBS with Trehalose. See Certificate of Analysis for details. *Small pack size (-SP) is supplied as a 0.2 µm filtered solution in PBS.

**APPLICATIONS**

**Please Note:** Optimal dilutions should be determined by each laboratory for each application. *General Protocols* are available in the *Technical Information* section on our website.

	<b>Recommended Concentration</b>	<b>Sample</b>
<b>Western Blot</b>	1 µg/mL	See Below

**DATA**



**PREPARATION AND STORAGE**

<b>Reconstitution</b>	Sterile PBS to a final concentration of 0.5 mg/mL.
<b>Shipping</b>	The product is shipped at ambient temperature. Upon receipt, store it immediately at the temperature recommended below. *Small pack size (-SP) is shipped with polar packs. Upon receipt, store it immediately at -20 to -70 °C
<b>Stability &amp; Storage</b>	<b>Use a manual defrost freezer and avoid repeated freeze-thaw cycles.</b> <ul style="list-style-type: none"> <li>● 12 months from date of receipt, -20 to -70 °C as supplied.</li> <li>● 1 month, 2 to 8 °C under sterile conditions after reconstitution.</li> <li>● 6 months, -20 to -70 °C under sterile conditions after reconstitution.</li> </ul>

**BACKGROUND**

NGL-3 (netrin-G ligand-3), also called LRRC4B (Leu-rich repeat/LRR-containing glycoprotein 4B), is a 72 kDa (predicted) post-synaptic adhesion molecule of the LRR protein family. Mature human LRRC4B is a 678 amino acid (aa) type I transmembrane protein with a 541 aa extracellular region (aa 36-576) containing nine LRRs, a C2-type Ig-like domain, and a Thr-rich segment. Over the region used as an immunogen, human LRRC4B shares 97% aa sequence identity with mouse and rat LRRC4B. LRRC4B also shares ~55% aa identity with LRRC4C/NGL-1 and LRRC4/NGL-2, but each recognizes different ligands. LRRC4B recognition of the receptor tyrosine phosphatases LAR/PTPRF, PTPR-d and PTPR-s induces excitatory synapse formation.