

DESCRIPTION

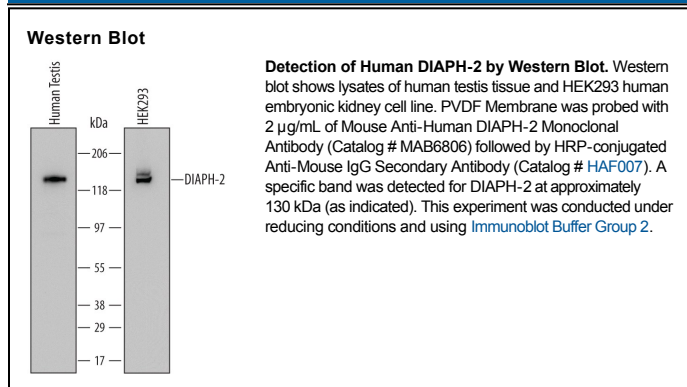
Species Reactivity	Human
Specificity	Detects human DIAPH-2 in direct ELISAs and Western blots.
Source	Monoclonal Mouse IgG _{2B} Clone # 699142
Purification	Protein A or G purified from hybridoma culture supernatant
Immunogen	<i>E. coli</i> -derived recombinant human DIAPH-2 Val314-Gln540 Accession # O60879
Formulation	Lyophilized from a 0.2 µm filtered solution in PBS with Trehalose. See Certificate of Analysis for details. *Small pack size (-SP) is supplied as a 0.2 µm filtered solution in PBS.

APPLICATIONS

Please Note: Optimal dilutions should be determined by each laboratory for each application. *General Protocols* are available in the *Technical Information* section on our website.

	Recommended Concentration	Sample
Western Blot	2 µg/mL	See Below

DATA



PREPARATION AND STORAGE

Reconstitution	Sterile PBS to a final concentration of 0.5 mg/mL.
Shipping	The product is shipped at ambient temperature. Upon receipt, store it immediately at the temperature recommended below. *Small pack size (-SP) is shipped with polar packs. Upon receipt, store it immediately at -20 to -70 °C
Stability & Storage	Use a manual defrost freezer and avoid repeated freeze-thaw cycles. <ul style="list-style-type: none"> ● 12 months from date of receipt, -20 to -70 °C as supplied. ● 1 month, 2 to 8 °C under sterile conditions after reconstitution. ● 6 months, -20 to -70 °C under sterile conditions after reconstitution.

BACKGROUND

DIAPH2 (diaphenous homolog 2), also called DRF2 (diaphanous-related formin 2), is an 1101 amino acid (aa), 126 kDa (calculated) cytoplasmic protein in the Diaphenous family of actin binding proteins. Disruption of DIAPH2 has been correlated with premature ovarian failure in humans. Within the region used as an immunogen, human DIAPH2 shares 89% and 90% aa identity with mouse and rat DIAPH2, respectively. Two additional isoforms have been described. One, called hDia2C (1097 aa), is lacking aa 45-55, but has 7 aa inserted after aa 149. This form specifically binds RhoD and restricts movement of early endosomes along actin filaments. A 1106 aa form diverges after aa 1080.