

**DESCRIPTION**

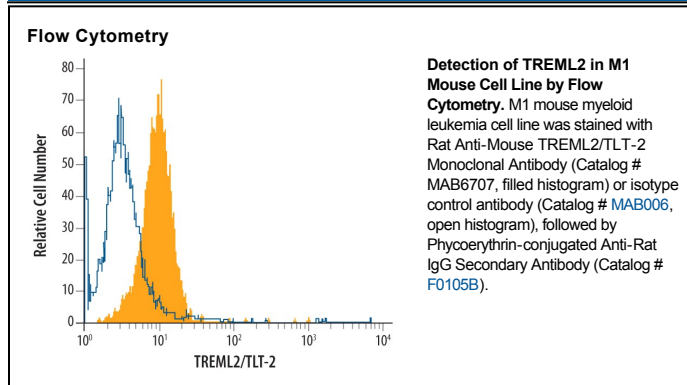
<b>Species Reactivity</b>	Mouse
<b>Specificity</b>	Detects mouse TREML2/TLT-2 in direct ELISAs. In direct ELISAs, no cross-reactivity with recombinant mouse (rm) TREM-1, -2, -2b, -3, -4, rmTREML1/TLT-1, rmTREML4/TLT-4, or recombinant human (rh) NKp44 is observed.
<b>Source</b>	Monoclonal Rat IgG <sub>2A</sub> Clone # 656906
<b>Purification</b>	Protein A or G purified from hybridoma culture supernatant
<b>Immunogen</b>	Chinese hamster ovary cell line CHO-derived recombinant mouse TREML2/TLT-2 His25-Ala270 Accession # Q2LA85
<b>Formulation</b>	Lyophilized from a 0.2 µm filtered solution in PBS with Trehalose. See Certificate of Analysis for details. *Small pack size (-SP) is supplied as a 0.2 µm filtered solution in PBS.

**APPLICATIONS**

**Please Note:** Optimal dilutions should be determined by each laboratory for each application. *General Protocols* are available in the *Technical Information* section on our website.

	<b>Recommended Concentration</b>	<b>Sample</b>
<b>Flow Cytometry</b>	2.5 µg/10 <sup>6</sup> cells	See Below
<b>CyTOF-ready</b>	Ready to be labeled using established conjugation methods. No BSA or other carrier proteins that could interfere with conjugation.	

**DATA**



**PREPARATION AND STORAGE**

<b>Reconstitution</b>	Sterile PBS to a final concentration of 0.5 mg/mL.
<b>Shipping</b>	The product is shipped at ambient temperature. Upon receipt, store it immediately at the temperature recommended below. *Small pack size (-SP) is shipped with polar packs. Upon receipt, store it immediately at -20 to -70 °C
<b>Stability &amp; Storage</b>	<b>Use a manual defrost freezer and avoid repeated freeze-thaw cycles.</b> <ul style="list-style-type: none"> <li>● 12 months from date of receipt, -20 to -70 °C as supplied.</li> <li>● 1 month, 2 to 8 °C under sterile conditions after reconstitution.</li> <li>● 6 months, -20 to -70 °C under sterile conditions after reconstitution.</li> </ul>

**BACKGROUND**

TREML2, also called TLT-2 (Trem-like transcript 2) is a 33 kDa (predicted) type I transmembrane cell surface receptor and member of the Trem family of receptor proteins. Mouse TLT-2 is synthesized as a 329 amino acid (aa) precursor that contains a 24 aa signal sequence, a 246 aa extracellular domain (ECD), a 21 aa transmembrane segment, and a 38 aa cytoplasmic tail. Within the ECD are an Ig-like V-type domain (aa 25-126) and one potential site for N-linked glycosylation. Mature mouse TLT-2 shares 49% aa sequence identity with mature human TLT-2. Cell surface expression of TLT-2 is seen for most of the B and myeloid cell lines. TLT-2 is also expressed constitutively on CD8<sup>+</sup> T cells.