

DESCRIPTION

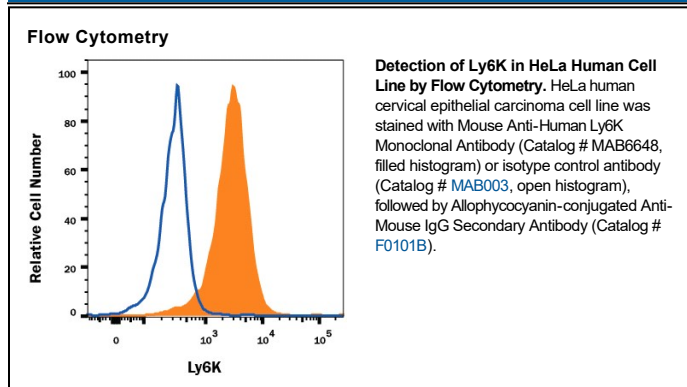
Species Reactivity	Human
Specificity	Detects human Ly6K in direct ELISAs.
Source	Monoclonal Mouse IgG _{2A} Clone # 750747
Purification	Protein A or G purified from hybridoma culture supernatant
Immunogen	Chinese hamster ovary cell line CHO-derived recombinant human Ly6K Met1-Gly138 Accession # Q17RY6
Formulation	Lyophilized from a 0.2 µm filtered solution in PBS with Trehalose. See Certificate of Analysis for details. *Small pack size (-SP) is supplied either lyophilized or as a 0.2 µm filtered solution in PBS.

APPLICATIONS

Please Note: Optimal dilutions should be determined by each laboratory for each application. General Protocols are available in the Technical Information section on our website.

	Recommended Concentration	Sample
Flow Cytometry	0.25 µg/10 ⁶ cells	See Below
CyTOF-ready	Ready to be labeled using established conjugation methods. No BSA or other carrier proteins that could interfere with conjugation.	

DATA



PREPARATION AND STORAGE

Reconstitution	Sterile PBS to a final concentration of 0.5 mg/mL.
Shipping	The product is shipped at ambient temperature. Upon receipt, store it immediately at the temperature recommended below. *Small pack size (-SP) is shipped with polar packs. Upon receipt, store it immediately at -20 to -70 °C
Stability & Storage	Use a manual defrost freezer and avoid repeated freeze-thaw cycles. <ul style="list-style-type: none"> ● 12 months from date of receipt, -20 to -70 °C as supplied. ● 1 month, 2 to 8 °C under sterile conditions after reconstitution. ● 6 months, -20 to -70 °C under sterile conditions after reconstitution.

BACKGROUND

Ly6K (Lymphocyte antigen 6 locus K; also CO16) is a 26-27 kDa member of the Ly-6 antigen family of molecules. It has restricted expression, being described in testis and skin. Ly6K is found in/on carcinomas, and is known to circulate in normal and tumor-patient blood. Mature human Ly6K is a 121 amino acid (aa) GPI-linked (presumed) glycoprotein. It is synthesized as a 165 aa preproprecursor that contains a 17 aa signal sequence, a 121 aa mature region (aa 18-138), and a 27 aa C-terminal propeptide. There are two potential splice variants, one that shows a 48 aa substitution, and another that shows a 33 aa substitution for aa 73-165. It is not clear if mouse Ly6K is a true molecular ortholog of human Ly6K. In any event, over aa 18-138, human Ly6K shares 39% aa identity with mouse Ly6K.