

DESCRIPTION

Species Reactivity	Human
Specificity	Detects human OXTR in direct ELISAs and Western blots.
Source	Monoclonal Mouse IgG _{2A} Clone # 634310
Purification	Protein A or G purified from hybridoma culture supernatant
Immunogen	HEK293 human embryonic kidney cell line transfected with human OXTR Accession # P30559
Formulation	Lyophilized from a 0.2 µm filtered solution in PBS with Trehalose. See Certificate of Analysis for details. *Small pack size (-SP) is supplied as a 0.2 µm filtered solution in PBS.

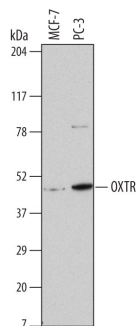
APPLICATIONS

Please Note: Optimal dilutions should be determined by each laboratory for each application. [General Protocols](#) are available in the Technical Information section on our website.

	Recommended Concentration	Sample
Western Blot	1 µg/mL	See Below
Immunohistochemistry	8-25 µg/mL	See Below

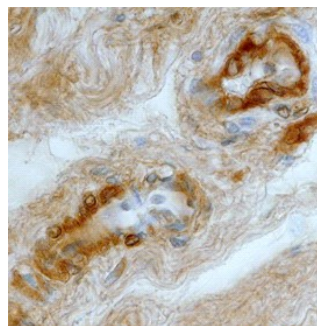
DATA

Western Blot



Detection of Human OXTR by Western Blot. Western blot shows lysates of MCF-7 human breast cancer cell line and PC-3 human prostate cancer cell line. PVDF Membrane was probed with 1 µg/mL of Mouse Anti-Human OXTR Monoclonal Antibody (Catalog # MAB6616) followed by HRP-conjugated Anti-Mouse IgG Secondary Antibody (Catalog # HAF007). A specific band was detected for OXTR at approximately 48 kDa (as indicated). This experiment was conducted under reducing conditions and using Immunoblot Buffer Group 1.

Immunohistochemistry



OXTR in Human Epididymus. OXTR was detected in immersion fixed paraffin-embedded sections of human epididymus using Mouse Anti-Human OXTR Monoclonal Antibody (Catalog # MAB6616) at 25 µg/mL overnight at 4 °C. Tissue was stained using the Anti-Mouse HRP-DAB Cell & Tissue Staining Kit (brown; Catalog # CTS002) and counterstained with hematoxylin (blue). Specific staining was localized to endothelial cells. View our protocol for [Chromogenic IHC Staining of Paraffin-embedded Tissue Sections](#).

PREPARATION AND STORAGE

Reconstitution	Sterile PBS to a final concentration of 0.5 mg/mL.
Shipping	The product is shipped at ambient temperature. Upon receipt, store it immediately at the temperature recommended below. *Small pack size (-SP) is shipped with polar packs. Upon receipt, store it immediately at -20 to -70 °C
Stability & Storage	Use a manual defrost freezer and avoid repeated freeze-thaw cycles. <ul style="list-style-type: none"> 12 months from date of receipt, -20 to -70 °C as supplied. 1 month, 2 to 8 °C under sterile conditions after reconstitution. 6 months, -20 to -70 °C under sterile conditions after reconstitution.

BACKGROUND

Oxytocin Receptor (OXTR) is a 60-70 kDa 7TM G protein-coupled receptor for the peptide hormone Oxytocin. OXTR plays a role in several aspects of reproductive function including uterine contraction, mammary gland proliferation, and milk ejection in the female and erection and ejaculation in the male. It also promotes natriuresis and the development of male aggression and mother/offspring relationships. OXTR can form homo-oligomers and hetero-oligomers with the Vasopressin receptors V1a and V2. Human OXTR shares 92% aa sequence identity with mouse and rat OXTR.