

## DESCRIPTION

<b>Species Reactivity</b>	Human
<b>Specificity</b>	Detects human FSH R in direct ELISAs.
<b>Source</b>	Monoclonal Mouse IgG <sub>2B</sub> Clone # 626723
<b>Purification</b>	Protein A or G purified from hybridoma culture supernatant
<b>Immunogen</b>	NS0 mouse myeloma cell line transfected with human FSH R Accession # M65085
<b>Formulation</b>	Lyophilized from a 0.2 µm filtered solution in PBS with Trehalose. See Certificate of Analysis for details. *Small pack size (-SP) is supplied either lyophilized or as a 0.2 µm filtered solution in PBS.

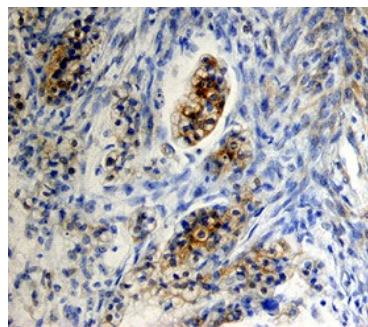
## APPLICATIONS

**Please Note:** Optimal dilutions should be determined by each laboratory for each application. [General Protocols](#) are available in the Technical Information section on our website.

	<b>Recommended Concentration</b>	<b>Sample</b>
<b>Immunohistochemistry</b>	8-25 µg/mL	See Below

## DATA

### Immunohistochemistry



**FSH R in Human Ovarian Cancer Tissue.** FSH R was detected in immersion fixed paraffin-embedded sections of human ovarian cancer tissue using Human FSH R Monoclonal Antibody (Catalog # MAB6559) at 15 µg/mL overnight at 4 °C. Tissue was stained using the Anti-Mouse HRP-DAB Cell & Tissue Staining Kit (brown; Catalog # CTS002) and counterstained with hematoxylin (blue). Specific staining was localized to cytoplasm. View our protocol for [Chromogenic IHC Staining of Paraffin-embedded Tissue Sections](#).

## PREPARATION AND STORAGE

<b>Reconstitution</b>	Sterile PBS to a final concentration of 0.5 mg/mL.
<b>Shipping</b>	The product is shipped at ambient temperature. Upon receipt, store it immediately at the temperature recommended below. *Small pack size (-SP) is shipped with polar packs. Upon receipt, store it immediately at -20 to -70 °C
<b>Stability &amp; Storage</b>	<b>Use a manual defrost freezer and avoid repeated freeze-thaw cycles.</b> <ul style="list-style-type: none"> <li>12 months from date of receipt, -20 to -70 °C as supplied.</li> <li>1 month, 2 to 8 °C under sterile conditions after reconstitution.</li> <li>6 months, -20 to -70 °C under sterile conditions after reconstitution.</li> </ul>

## BACKGROUND

Follicle stimulating hormone receptor (FSH R), also called follitropin receptor or LGR1, is a 695 amino acid (aa), ~87 kDa 7-transmembrane receptor of the leucine-rich repeat glycoprotein hormone receptor subfamily of GPCRs. It is expressed by ovarian granulosa cells and is essential for ovarian follicle maturation. In the male, it is expressed by Sertoli cells and plays a minor role in male fertility. Human FSH R shares 86% aa sequence identity with mouse and rat FSH R within the 349 aa N-terminal extracellular domain. A 754 aa isoform contains an inserted sequence at aa 75.