

DESCRIPTION

Species Reactivity	Human
Specificity	Detects human GAL-R2 in direct ELISAs.
Source	Monoclonal Mouse IgG _{2B} Clone # 616520
Purification	Protein A or G purified from hybridoma culture supernatant
Immunogen	NS0 mouse myeloma cell line transfected with human Galanin R2 Accession # O43603
Formulation	Lyophilized from a 0.2 µm filtered solution in PBS with Trehalose. See Certificate of Analysis for details. *Small pack size (-SP) is supplied as a 0.2 µm filtered solution in PBS.

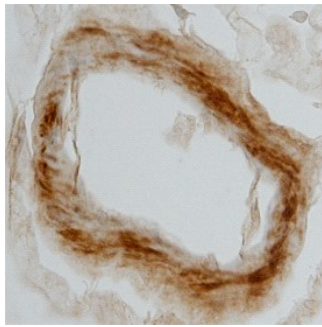
APPLICATIONS

Please Note: Optimal dilutions should be determined by each laboratory for each application. *General Protocols* are available in the *Technical Information* section on our website.

	Recommended Concentration	Sample
Immunohistochemistry	8-25 µg/mL	See Below

DATA

Immunohistochemistry



Galanin R2 in Human Brain. Galanin R2 was detected in immersion fixed paraffin-embedded sections of human brain (hippocampus) using Human Galanin R2 Monoclonal Antibody (Catalog # MAB6544) at 25 µg/mL overnight at 4 °C. Tissue was stained using the Anti-Mouse HRP-DAB Cell & Tissue Staining Kit (brown; Catalog # CTS002) and counterstained with hematoxylin (blue). Specific staining was localized to smooth muscle cells of blood vessels. View our protocol for [Chromogenic IHC Staining of Paraffin-embedded Tissue Sections](#).

PREPARATION AND STORAGE

Reconstitution	Sterile PBS to a final concentration of 0.5 mg/mL.
Shipping	The product is shipped at ambient temperature. Upon receipt, store it immediately at the temperature recommended below. *Small pack size (-SP) is shipped with polar packs. Upon receipt, store it immediately at -20 to -70 °C
Stability & Storage	Use a manual defrost freezer and avoid repeated freeze-thaw cycles. <ul style="list-style-type: none"> ● 12 months from date of receipt, -20 to -70 °C as supplied. ● 1 month, 2 to 8 °C under sterile conditions after reconstitution. ● 6 months, -20 to -70 °C under sterile conditions after reconstitution.

BACKGROUND

GALR2 (Galanin Receptor 2) is one of three 54-60 kDa G-protein coupled multipass transmembrane receptors for the Galanin neuropeptide. Galanin is co-expressed with and modulates noradrenaline and serotonin systems. GALR2 is thought to modulate growth and apoptosis. Unlike GALR and GALR3, it is thought to be anti-depressive. GALR2 mRNA is found mainly in the central nervous system (except for cerebral cortex), but also in intestine, heart, kidney, liver and many cancers. The combined extracellular domains of human GALR2 share 82% and 86% amino acid identity with mouse and rat GALR2, respectively.