

**DESCRIPTION**

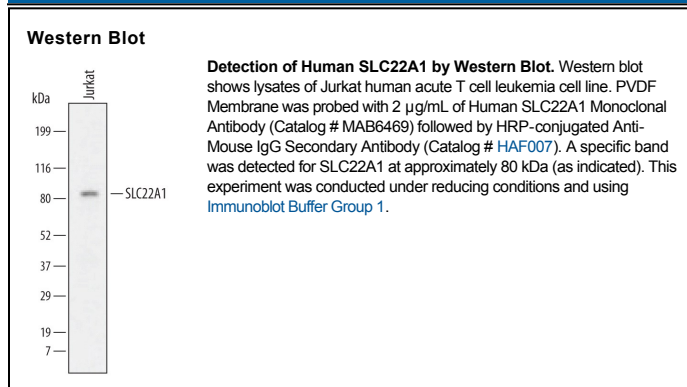
<b>Species Reactivity</b>	Human
<b>Specificity</b>	Detects human SLC22A1 in Western blots.
<b>Source</b>	Monoclonal Mouse IgG <sub>2A</sub> Clone # 609222
<b>Purification</b>	Protein A or G purified from hybridoma culture supernatant
<b>Immunogen</b>	NS0 mouse myeloma cell line transfected with human SLC22A1 Met1-Thr554 Accession # NP_003048
<b>Formulation</b>	Lyophilized from a 0.2 µm filtered solution in PBS with Trehalose. See Certificate of Analysis for details. *Small pack size (-SP) is supplied as a 0.2 µm filtered solution in PBS.

**APPLICATIONS**

**Please Note:** Optimal dilutions should be determined by each laboratory for each application. *General Protocols* are available in the *Technical Information* section on our website.

	<b>Recommended Concentration</b>	<b>Sample</b>
<b>Western Blot</b>	2 µg/mL	See Below

**DATA**



**PREPARATION AND STORAGE**

<b>Reconstitution</b>	Sterile PBS to a final concentration of 0.5 mg/mL.
<b>Shipping</b>	The product is shipped at ambient temperature. Upon receipt, store it immediately at the temperature recommended below. *Small pack size (-SP) is shipped with polar packs. Upon receipt, store it immediately at -20 to -70 °C
<b>Stability &amp; Storage</b>	<b>Use a manual defrost freezer and avoid repeated freeze-thaw cycles.</b> <ul style="list-style-type: none"> <li>● 12 months from date of receipt, -20 to -70 °C as supplied.</li> <li>● 1 month, 2 to 8 °C under sterile conditions after reconstitution.</li> <li>● 6 months, -20 to -70 °C under sterile conditions after reconstitution.</li> </ul>

**BACKGROUND**

SLC22A1 (solute carrier family 22 member 1), also called OCT1, is a 554 amino acid (aa), 70-80 kDa 12-transmembrane glycoprotein of the SLC22 family of polyspecific organic cation transporters (OCT). SLC22A1 is expressed in epithelial cells and some neurons, with detection on hepatocyte sinusoidal membranes and enterocyte basolateral membranes. It transports selected cations bidirectionally and is inhibited by non-transported cations. Human SLC22A1 shares 78% aa identity with mouse and rat SLC22A1. In humans, three inactive isoforms of 506, 483 and 353 aa, lack C-terminal exons 5, 5 and 6, or 3 and 6, respectively.