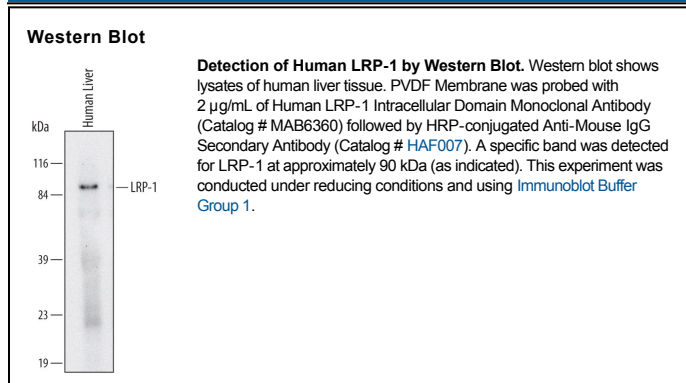


DESCRIPTION	
Species Reactivity	Human
Specificity	Detects human LRP-1 in direct ELISAs and Western blots. In direct ELISAs, no cross-reactivity with recombinant human (rh) LRP-1 clusters 2, 3, or 4, rhLRP-4, rhLRP-5, rhLRP-5 intracellular domain, rhLRP-6, rhLRP-6 intracellular domain, or rhLRPAP is observed.
Source	Monoclonal Mouse IgG _{2B} Clone # 545503
Purification	Protein A or G purified from hybridoma culture supernatant
Immunogen	<i>E. coli</i> -derived recombinant human LRP-1 Gln4449-ala4544 Accession # Q07954
Formulation	Lyophilized from a 0.2 µm filtered solution in PBS with Trehalose. See Certificate of Analysis for details. *Small pack size (-SP) is supplied as a 0.2 µm filtered solution in PBS.

APPLICATIONS	
Please Note: Optimal dilutions should be determined by each laboratory for each application. <i>General Protocols</i> are available in the <i>Technical Information</i> section on our website.	

	Recommended Concentration	Sample
Western Blot	2 µg/mL	See Below

DATA



PREPARATION AND STORAGE	
Reconstitution	Reconstitute at 0.5 mg/mL in sterile PBS.
Shipping	The product is shipped at ambient temperature. Upon receipt, store it immediately at the temperature recommended below. *Small pack size (-SP) is shipped with polar packs. Upon receipt, store it immediately at -20 to -70 °C
Stability & Storage	Use a manual defrost freezer and avoid repeated freeze-thaw cycles. <ul style="list-style-type: none"> ● 12 months from date of receipt, -20 to -70 °C as supplied. ● 1 month, 2 to 8 °C under sterile conditions after reconstitution. ● 6 months, -20 to -70 °C under sterile conditions after reconstitution.