

DESCRIPTION

Species Reactivity	Human/Primate
Specificity	Detects human and primate EGF in ELISAs. In sandwich ELISAs, no cross-reactivity or interference is observed with recombinant mouse (rm) EGF, bovine FGF acidic, bovine FGF basic, recombinant human (rh) G-CSF, rhGM-CSF, rmGM-CSF, rhLIF, human PDGF, porcine PDGF, rhTGF- α , hTGF- β 1, pTGF- β 1, rhTGF- β 1, porcine TGF- β 1.2, porcine TGF- β 2, rhTNF- α , or rhTNF- β .
Source	Monoclonal Mouse IgG ₁ Clone # 10827
Purification	Protein A or G purified from hybridoma culture supernatant
Immunogen	<i>E. coli</i> -derived recombinant human EGF
Formulation	Lyophilized from a 0.2 μ m filtered solution in PBS with Trehalose. See Certificate of Analysis for details. *Small pack size (-SP) is supplied either lyophilized or as a 0.2 μ m filtered solution in PBS.

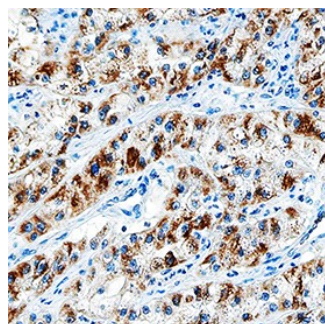
APPLICATIONS

Please Note: Optimal dilutions should be determined by each laboratory for each application. General Protocols are available in the Technical Information section on our website.

	Recommended Concentration	Sample
Immunohistochemistry	8-25 μ g/mL	See Below
Human/Primate EGF Sandwich Immunoassay		Reagent
ELISA Capture	2-8 μ g/mL	Human/Primate EGF Antibody (Catalog # MAB636)
ELISA Detection	0.1-0.4 μ g/mL	Human/Primate EGF Biotinylated Antibody (Catalog # BAF236)
Standard		Recombinant Human EGF (Catalog # 236-EG)

DATA

Immunohistochemistry



EGF in Human Lung Cancer Tissue. EGF was detected in immersion fixed paraffin-embedded sections of human lung cancer tissue using Mouse Anti-Human/Primate EGF Monoclonal Antibody (Catalog # MAB636) at 15 μ g/mL overnight at 4 °C. Tissue was stained using the Anti-Mouse HRP-DAB Cell & Tissue Staining Kit (brown; Catalog # CTS002) and counterstained with hematoxylin (blue). Specific staining was localized to the plasma membrane and cytoplasm. View our protocol for Chromogenic IHC Staining of Paraffin-embedded Tissue Sections.

PREPARATION AND STORAGE

Reconstitution	Reconstitute at 0.5 mg/mL in sterile PBS.
Shipping	The product is shipped at ambient temperature. Upon receipt, store it immediately at the temperature recommended below. *Small pack size (-SP) is shipped with polar packs. Upon receipt, store it immediately at -20 to -70 °C
Stability & Storage	Use a manual defrost freezer and avoid repeated freeze-thaw cycles. <ul style="list-style-type: none"> 12 months from date of receipt, -20 to -70 °C as supplied. 1 month, 2 to 8 °C under sterile conditions after reconstitution. 6 months, -20 to -70 °C under sterile conditions after reconstitution.

BACKGROUND

EGF is the prototypic member of a family of growth factors that are characterized by the presence of EGF like domains and activate members of the EGF receptor family. Proteolytic cleavage of a membrane-bound precursor releases mature soluble EGF which interacts with the EGF R to promote proliferation and differentiation of mesenchymal and epithelial cells.