

DESCRIPTION

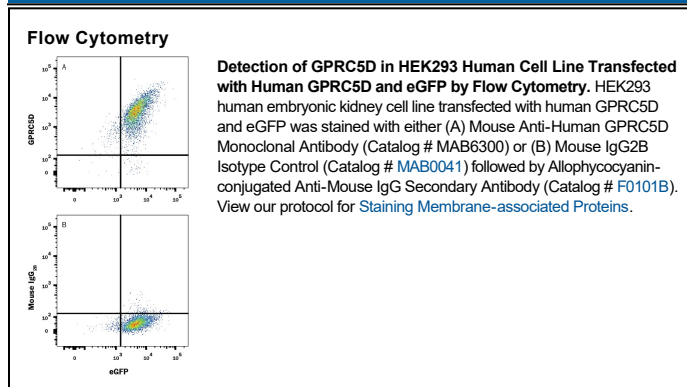
Species Reactivity	Human
Specificity	Detects human GPRC5D in direct ELISAs. Stains human GPRC5D transfectants but not irrelevant transfectants in flow cytometry.
Source	Monoclonal Mouse IgG _{2B} Clone # 571961
Purification	Protein A or G purified from hybridoma culture supernatant
Immunogen	NS0 mouse myeloma cell line transfected with human GPRC5D Met1-Val359 Accession # Q9NZD1
Formulation	Lyophilized from a 0.2 µm filtered solution in PBS with Trehalose. See Certificate of Analysis for details. *Small pack size (-SP) is supplied either lyophilized or as a 0.2 µm filtered solution in PBS.

APPLICATIONS

Please Note: Optimal dilutions should be determined by each laboratory for each application. *General Protocols* are available in the *Technical Information* section on our website.

	Recommended Concentration	Sample
Flow Cytometry	0.25 µg/10 ⁶ cells	See Below

DATA



PREPARATION AND STORAGE

Reconstitution	Reconstitute at 0.5 mg/mL in sterile PBS.
Shipping	The product is shipped at ambient temperature. Upon receipt, store it immediately at the temperature recommended below. *Small pack size (-SP) is shipped with polar packs. Upon receipt, store it immediately at -20 to -70 °C
Stability & Storage	Use a manual defrost freezer and avoid repeated freeze-thaw cycles. <ul style="list-style-type: none"> ● 12 months from date of receipt, -20 to -70 °C as supplied. ● 1 month, 2 to 8 °C under sterile conditions after reconstitution. ● 6 months, -20 to -70 °C under sterile conditions after reconstitution.

BACKGROUND

G-protein coupled receptor family C group 5 member D (GPRC5D) is a retinoic acid-inducible 40 kDa protein with seven transmembrane segments and a short N-terminal extracellular region. It is expressed in keratinizing epithelial cells, the pancreas, kidney, small intestine, spleen, and testis. Alternate splicing generates two additional isoforms with substitutions or truncations in the cytoplasmic tail. Human GPRC5D shares approximately 80% aa sequence identity with mouse and rat GPRC5D.