

DESCRIPTION

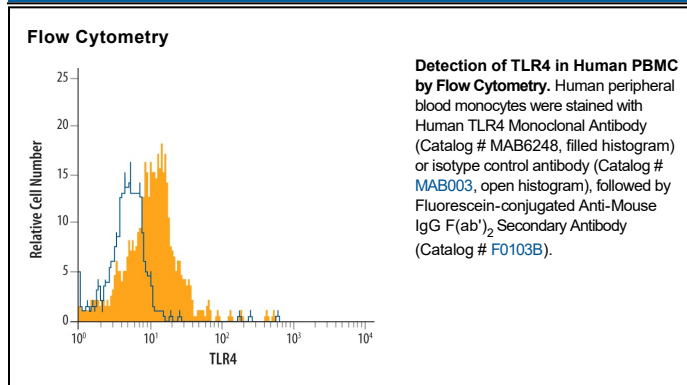
Species Reactivity	Human
Specificity	Detects human TLR4 in direct ELISAs. In direct ELISAs, no cross-reactivity with recombinant human (rh) TLR1, 2, 3, 5, 7, 8, 9, 10, recombinant mouse (rm) TLR4, rmTLR6, rhTIRAP, rhIL-1 RI, rhIL-1 RII, rhIL-1 RAcP, rhST2, rhIL-18 R, rhIL-1 Rrp2, rhIL-18 R β , rhSIGIRR, rhIL-1 RAPL1, rhIL-1 RAPL2, rhMD-1, rhMD-2, or rmRP105 is observed.
Source	Monoclonal Mouse IgG _{2A} Clone # 610015
Purification	Protein A or G purified from hybridoma culture supernatant
Immunogen	Mouse myeloma cell line NS0-derived recombinant human TLR4 Glu24-Lys631 Accession # O00206
Formulation	Lyophilized from a 0.2 μ m filtered solution in PBS with Trehalose. See Certificate of Analysis for details. *Small pack size (-SP) is supplied either lyophilized or as a 0.2 μ m filtered solution in PBS.

APPLICATIONS

Please Note: Optimal dilutions should be determined by each laboratory for each application. *General Protocols* are available in the *Technical Information* section on our website.

	Recommended Concentration	Sample
Flow Cytometry	0.25 μ g/10 ⁶ cells	See Below
CyTOF-ready	Ready to be labeled using established conjugation methods. No BSA or other carrier proteins that could interfere with conjugation.	

DATA



PREPARATION AND STORAGE

Reconstitution	Sterile PBS to a final concentration of 0.5 mg/mL.
Shipping	The product is shipped at ambient temperature. Upon receipt, store it immediately at the temperature recommended below. *Small pack size (-SP) is shipped with polar packs. Upon receipt, store it immediately at -20 to -70 °C
Stability & Storage	Use a manual defrost freezer and avoid repeated freeze-thaw cycles. <ul style="list-style-type: none"> ● 12 months from date of receipt, -20 to -70 °C as supplied. ● 1 month, 2 to 8 °C under sterile conditions after reconstitution. ● 6 months, -20 to -70 °C under sterile conditions after reconstitution.

BACKGROUND

Toll-Like Receptor (TLR4) belongs to the IL-1 receptor/Toll-like receptor superfamily. It is expressed in placenta and peripheral blood leukocytes. TLR4 is the pattern recognition receptor for LPS.