

DESCRIPTION

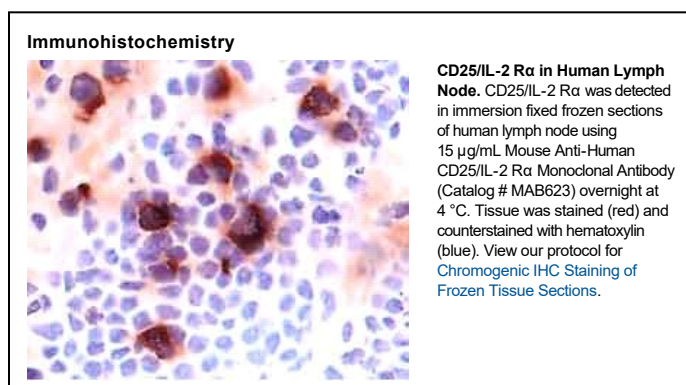
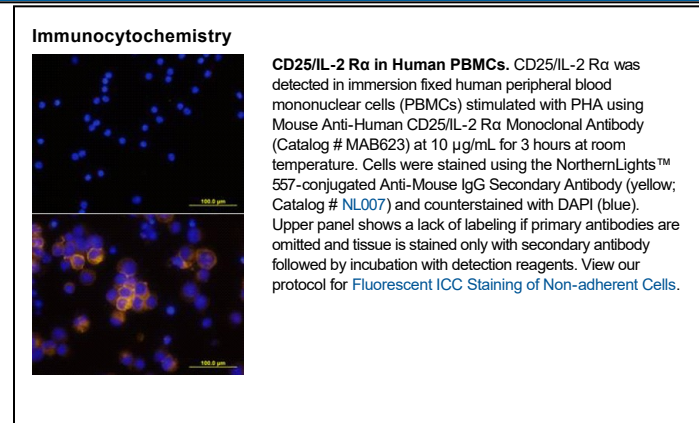
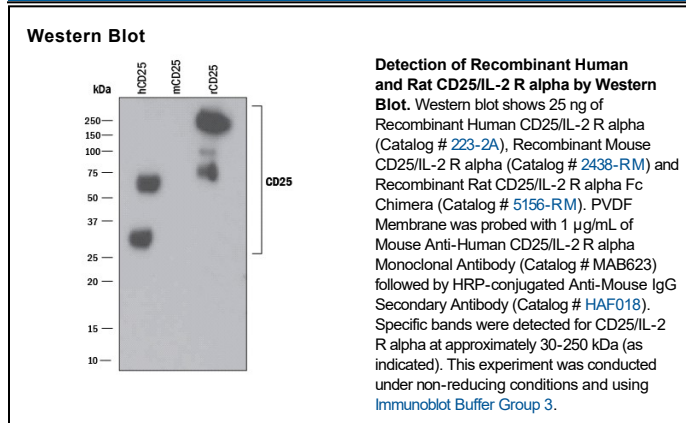
Species Reactivity	Human
Specificity	Detects human CD25/IL-2 R α in ELISAs and Western blots. In Western blots, detects recombinant rat CD25/IL-2 R α but no cross-reactivity with recombinant mouse CD25/IL-2 R α . In sandwich immunoassays, this antibody does not cross-react or interfere with recombinant human (rh) IL-1 RI, rhIL-1 RII, rhIL-2 R β , rhIL-3 R α , rhIL-4 R, rhIL-5 R α , rhIL-5 R β , rhIL-6 R, or rhgp130.
Source	Monoclonal Mouse IgG ₁ Clone # 24204
Purification	Protein A or G purified from ascites
Immunogen	<i>S. frugiperda</i> insect ovarian cell line Sf 21-derived recombinant human CD25/IL-2 R α Glu22-Cys213 Accession # P01589
Formulation	Lyophilized from a 0.2 μ m filtered solution in PBS with Trehalose. See Certificate of Analysis for details. *Small pack size (-SP) is supplied either lyophilized or as a 0.2 μ m filtered solution in PBS.

APPLICATIONS

Please Note: Optimal dilutions should be determined by each laboratory for each application. *General Protocols* are available in the *Technical Information* section on our website.

	Recommended Concentration	Sample
Western Blot	1 μ g/mL	See Below
Immunocytochemistry	8-25 μ g/mL	See Below
Immunohistochemistry	8-25 μ g/mL	See Below
Human CD25/IL-2 Rα Sandwich Immunoassay		Reagent
ELISA Capture	2-8 μ g/mL	Human CD25/IL-2 R alpha Antibody (Catalog # MAB623)
ELISA Detection	0.1-0.4 μ g/mL	Human CD25/IL-2 R alpha Biotinylated Antibody (Catalog # BAF223)
Standard		Recombinant Human CD25/IL-2 R alpha (Catalog # 223-2A)

DATA



PREPARATION AND STORAGE

Reconstitution Reconstitute at 0.5 mg/mL in sterile PBS.

Shipping The product is shipped at ambient temperature. Upon receipt, store it immediately at the temperature recommended below.
*Small pack size (-SP) is shipped with polar packs. Upon receipt, store it immediately at -20 to -70 °C

Stability & Storage Use a manual defrost freezer and avoid repeated freeze-thaw cycles.

- 12 months from date of receipt, -20 to -70 °C as supplied.
- 1 month, 2 to 8 °C under sterile conditions after reconstitution.
- 6 months, -20 to -70 °C under sterile conditions after reconstitution.

BACKGROUND

IL-2 R α is a type I transmembrane protein that associates with IL-2 R β and the common γ chain to form a high affinity heterotrimeric receptor complex for IL-2. A soluble form of IL-2 R α has been detected in serum.