

#### DESCRIPTION

<b>Specificity</b>	Detects TGF- $\beta$ 2 from multiple species in ELISAs and Western blots. In ELISAs, no cross-reactivity or interference with recombinant human (rh) TGF- $\alpha$ , recombinant porcine TGF- $\beta$ 1, rhTGF- $\beta$ 1, recombinant canine TGF- $\beta$ 3, recombinant amphibian TGF- $\beta$ 5, rhTGF- $\beta$ RII, or rhTGF- $\beta$ RIII is observed.
<b>Source</b>	Monoclonal Mouse IgG <sub>2B</sub> Clone # 8607
<b>Purification</b>	Protein A or G purified from ascites
<b>Immunogen</b>	Porcine TGF- $\beta$ 1.2
<b>Formulation</b>	Lyophilized from a 0.2 $\mu$ m filtered solution in PBS with Trehalose. See Certificate of Analysis for details. *Small pack size (-SP) is supplied as a 0.2 $\mu$ m filtered solution in PBS.

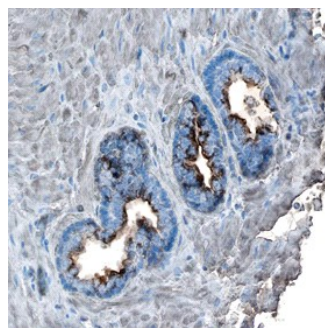
#### APPLICATIONS

**Please Note:** Optimal dilutions should be determined by each laboratory for each application. *General Protocols* are available in the *Technical Information* section on our website.

	<b>Recommended Concentration</b>	<b>Sample</b>
<b>Western Blot</b>	1 $\mu$ g/mL	Recombinant Human TGF- $\beta$ 2 (Catalog # 302-B2) under non-reducing conditions only
<b>Immunohistochemistry</b>	8-25 $\mu$ g/mL	See Below
<b>Human TGF-<math>\beta</math>2 Sandwich Immunoassay</b>		<b>Reagent</b>
<b>ELISA Capture</b>	2-8 $\mu$ g/mL	TGF- $\beta$ 2 Antibody (Catalog # MAB612)
<b>ELISA Detection</b>	0.1-0.4 $\mu$ g/mL	TGF- $\beta$ 2 Biotinylated Antibody (Catalog # BAF302)
<b>Standard</b>		Recombinant Human TGF- $\beta$ 2 (Catalog # 302-B2)

#### DATA

##### Immunohistochemistry



**TGF- $\beta$ 2 in Human Prostate Cancer.** TGF- $\beta$ 2 was detected in immersion fixed paraffin-embedded sections of human prostate cancer tissue using Mouse Anti-TGF- $\beta$ 2 Monoclonal Antibody (Catalog # MAB612) at 15  $\mu$ g/mL overnight at 4 °C. Tissue was stained using the Anti-Mouse HRP-DAB Cell & Tissue Staining Kit (brown; Catalog # CTS002) and counterstained with hematoxylin (blue). Specific staining was localized to cytoplasm in cancer cells. View our protocol for [Chromogenic IHC Staining of Paraffin-embedded Tissue Sections](#).

#### PREPARATION AND STORAGE

<b>Reconstitution</b>	Reconstitute at 0.5 mg/mL in sterile PBS.
<b>Shipping</b>	The product is shipped at ambient temperature. Upon receipt, store it immediately at the temperature recommended below. *Small pack size (-SP) is shipped with polar packs. Upon receipt, store it immediately at -20 to -70 °C
<b>Stability &amp; Storage</b>	<b>Use a manual defrost freezer and avoid repeated freeze-thaw cycles.</b> <ul style="list-style-type: none"> <li>• 12 months from date of receipt, -20 to -70 °C as supplied.</li> <li>• 1 month, 2 to 8 °C under sterile conditions after reconstitution.</li> <li>• 6 months, -20 to -70 °C under sterile conditions after reconstitution.</li> </ul>

#### BACKGROUND

The active form of TGF- $\beta$ 2 is a disulfide-linked homodimer which is generated by activation of the latent TGF- $\beta$ 2 complex. TGF- $\beta$ s are multifunctional cytokines that activate or repress multiple genes in a wide variety of cell types. Depending on the cell context, TGF- $\beta$  can control many cellular processes including growth, morphogenesis, and apoptosis.