

DESCRIPTION

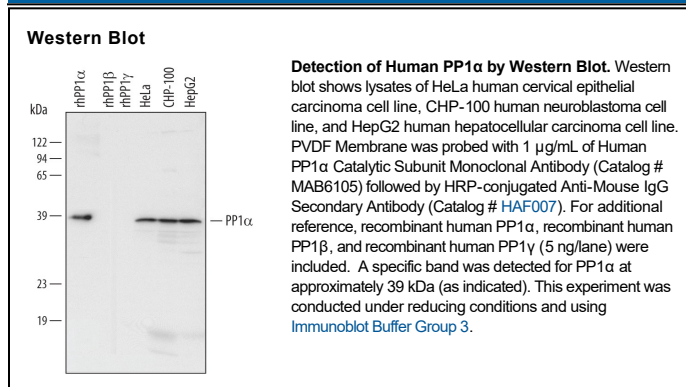
| | |
|---------------------------|---|
| Species Reactivity | Human |
| Specificity | Detects human PP1 α Catalytic Subunit in Western blots. In Western blots, no cross-reactivity with recombinant human (rh) PP1 β or rhPP1 γ is observed. |
| Source | Monoclonal Mouse IgG _{2A} Clone # 490314 |
| Purification | Protein A or G purified from hybridoma culture supernatant |
| Immunogen | synthetic peptide corresponding to Gly304-Arg317 of human PP1 α catalytic subunit Gly304-Arg317 Accession # P62136 |
| Formulation | Lyophilized from a 0.2 μ m filtered solution in PBS with Trehalose. See Certificate of Analysis for details. *Small pack size (-SP) is supplied either lyophilized or as a 0.2 μ m filtered solution in PBS. |

APPLICATIONS

Please Note: Optimal dilutions should be determined by each laboratory for each application. *General Protocols* are available in the *Technical Information* section on our website.

| | Recommended Concentration | Sample |
|---------------------|---------------------------|-----------|
| Western Blot | 1 μ g/mL | See Below |

DATA



PREPARATION AND STORAGE

| | |
|--------------------------------|---|
| Reconstitution | Reconstitute at 0.5 mg/mL in sterile PBS. |
| Shipping | The product is shipped at ambient temperature. Upon receipt, store it immediately at the temperature recommended below. *Small pack size (-SP) is shipped with polar packs. Upon receipt, store it immediately at -20 to -70 °C |
| Stability & Storage | <p>Use a manual defrost freezer and avoid repeated freeze-thaw cycles.</p> <ul style="list-style-type: none"> ● 12 months from date of receipt, -20 to -70 °C as supplied. ● 1 month, 2 to 8 °C under sterile conditions after reconstitution. ● 6 months, -20 to -70 °C under sterile conditions after reconstitution. |

BACKGROUND

Protein Phosphatase 1, also known as PP1 and PPP1, is an enzyme that removes phosphate groups attached to serine or threonine residues in proteins. The holoenzyme is composed of two subunits, a catalytic subunit that is highly conserved throughout evolution, and a wide variety of regulatory subunits that target the enzyme to specific subcellular compartments and proteins. Three isoforms of the catalytic subunit are ubiquitously expressed in tissues and cell lines: PP1 α , PP1 β and PP1 γ .