

DESCRIPTION

| | |
|---------------------------|---|
| Species Reactivity | Human |
| Specificity | Detects human RCOR1/CoREST in direct ELISAs and Western blots. In direct ELISAs, no cross-reactivity with recombinant human RCOR3 is observed. |
| Source | Monoclonal Mouse IgG _{2B} Clone # 658526 |
| Purification | Protein A or G purified from hybridoma culture supernatant |
| Immunogen | <i>E. coli</i> -derived recombinant human RCOR1/CoREST Ala394-Ser482 Accession # Q9UKL0 |
| Formulation | Lyophilized from a 0.2 µm filtered solution in PBS with Trehalose. See Certificate of Analysis for details. *Small pack size (-SP) is supplied either lyophilized or as a 0.2 µm filtered solution in PBS. |

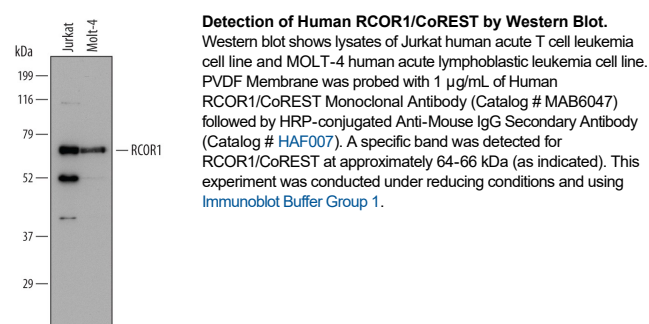
APPLICATIONS

Please Note: Optimal dilutions should be determined by each laboratory for each application. [General Protocols](#) are available in the Technical Information section on our website.

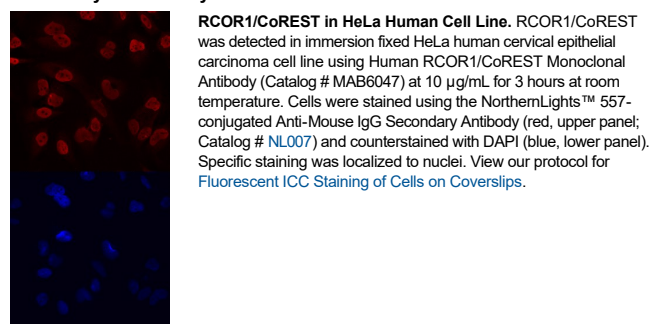
| | Recommended Concentration | Sample |
|----------------------------|----------------------------------|---------------|
| Western Blot | 1 µg/mL | See Below |
| Immunocytochemistry | 8-25 µg/mL | See Below |

DATA

Western Blot



Immunocytochemistry



PREPARATION AND STORAGE

| | |
|--------------------------------|--|
| Reconstitution | Sterile PBS to a final concentration of 0.5 mg/mL. |
| Shipping | The product is shipped at ambient temperature. Upon receipt, store it immediately at the temperature recommended below. *Small pack size (-SP) is shipped with polar packs. Upon receipt, store it immediately at -20 to -70 °C |
| Stability & Storage | Use a manual defrost freezer and avoid repeated freeze-thaw cycles. <ul style="list-style-type: none"> 12 months from date of receipt, -20 to -70 °C as supplied. 1 month, 2 to 8 °C under sterile conditions after reconstitution. 6 months, -20 to -70 °C under sterile conditions after reconstitution. |

BACKGROUND

RCOR1 (REST [RE-1 silencing transcription factor] CORepressor 1; also CoREST) is a 64-66 kDa member of the CoREST family of proteins. It is a nuclear protein that is ubiquitously expressed. RCOR1 serves as a molecular bridge, linking REST with Sin3, HDAC, LSD1, histone H3 K9 me-thyltransferases, and MeCP2. This creates a complex that represses the expression of neuron-specific genes in nonneuronal cells, principally by coordinating the demethylation of Lys4 in histone H3. Human RCOR1 is 482 amino acids (aa) in length. It contains one ELM2 domain (aa 102-157) that interacts with HDAC, and two SANT sequences (aa 187-238 and 378-429) that bind DNA tandem repeats. There are three potential RCOR1 splice variants. One contains a four aa substitution for aa 296-482, a second shows an alternative start site 3 aa upstream of the standard site, while a third shares the same upstream start site accompanied by a 15 aa substitution for aa 471-482. Over aa 394-482, human RCOR1 shares 93% aa identity with mouse RCOR1.