

## DESCRIPTION

<b>Species Reactivity</b>	Human/Primate
<b>Specificity</b>	Detects human and primate IL-2 in ELISAs. In sandwich immunoassays, no cross-reactivity with recombinant human (rh) IL-1 $\alpha$ , rhIL-1 $\beta$ , rhIL-3, rhIL-4, rhIL-6, rhIL-7, rhIL-8, recombinant mouse (rm) IL-1 $\beta$ , rmlL-2, rmlL-3, rmlL-4, rmlL-5, rmlL-6, or rmlL-7 is observed.
<b>Source</b>	Monoclonal Mouse IgG <sub>2A</sub> Clone # 5355
<b>Purification</b>	Protein A or G purified from hybridoma culture supernatant
<b>Immunogen</b>	<i>E. coli</i> -derived recombinant human IL-2 Ala21-Thr153 Accession # NP_000577
<b>Formulation</b>	Lyophilized from a 0.2 $\mu$ m filtered solution in PBS with Trehalose. See Certificate of Analysis for details. *Small pack size (-SP) is supplied as a 0.2 $\mu$ m filtered solution in PBS.

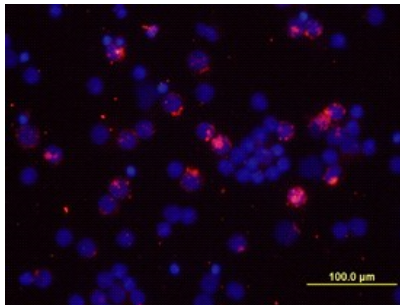
## APPLICATIONS

**Please Note:** Optimal dilutions should be determined by each laboratory for each application. *General Protocols* are available in the *Technical Information* section on our website.

	Recommended Concentration	Sample
<b>Immunocytochemistry</b>	8-25 $\mu$ g/mL	See Below
<b>Human/Primate IL-2 Sandwich Immunoassay</b>		<b>Reagent</b>
<b>ELISA Capture</b>	2-8 $\mu$ g/mL	Human/Primate IL-2 Antibody (Catalog # MAB602)
<b>ELISA Detection</b>	0.1-0.4 $\mu$ g/mL	Human/Primate IL-2 Biotinylated Antibody (Catalog # BAF202)
<b>Standard</b>		Recombinant Human IL-2 (Catalog # 202-IL)

## DATA

### Immunocytochemistry



**IL-2 in Human PBMCs.** IL-2 was detected in immersion fixed human peripheral blood mononuclear cells (PBMCs) stimulated with PMA and ionomycin using 10  $\mu$ g/mL Mouse Anti-Human/Primate IL-2 Monoclonal Antibody (Catalog # MAB602) for 3 hours at room temperature. Cells were stained with the NorthernLights™ 557-conjugated Anti-Mouse IgG Secondary Antibody (red; Catalog # NL007) and counterstained with DAPI (blue). View our protocol for [Fluorescent ICC Staining of Non-adherent Cells](#).

## PREPARATION AND STORAGE

<b>Reconstitution</b>	Reconstitute at 0.5 mg/mL in sterile PBS.
<b>Shipping</b>	The product is shipped at ambient temperature. Upon receipt, store it immediately at the temperature recommended below. *Small pack size (-SP) is shipped with polar packs. Upon receipt, store it immediately at -20 to -70 °C
<b>Stability &amp; Storage</b>	<b>Use a manual defrost freezer and avoid repeated freeze-thaw cycles.</b> <ul style="list-style-type: none"> <li>● 12 months from date of receipt, -20 to -70 °C as supplied.</li> <li>● 1 month, 2 to 8 °C under sterile conditions after reconstitution.</li> <li>● 6 months, -20 to -70 °C under sterile conditions after reconstitution.</li> </ul>

## BACKGROUND

Interleukin-2 (IL-2) is a cytokine that stimulates the growth and differentiation of B cells, T cells, NK cells, and monocyte/macrophages. It functions through the heterotrimeric IL-2 receptor comprising  $\alpha$ ,  $\beta$ , and  $\gamma$  chains.