

DESCRIPTION

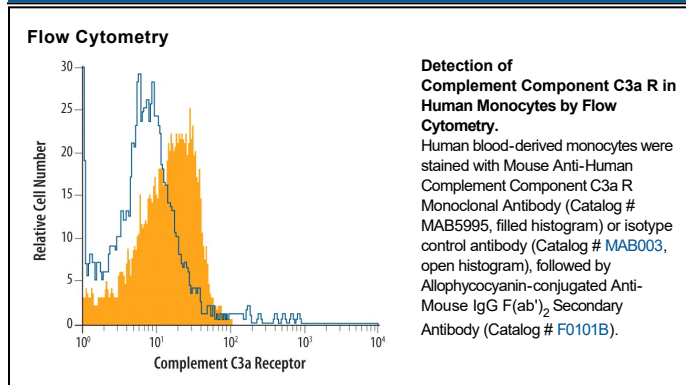
Species Reactivity	Human
Specificity	Detects human Complement Component C3a R in direct ELISAs.
Source	Monoclonal Mouse IgG _{2A} Clone # 534625
Purification	Protein A or G purified from hybridoma culture supernatant
Immunogen	NS0 mouse myeloma cell line transfected with human C3a R Met1-Val482 Accession # Q16581
Formulation	Lyophilized from a 0.2 µm filtered solution in PBS with Trehalose. See Certificate of Analysis for details. *Small pack size (-SP) is supplied either lyophilized or as a 0.2 µm filtered solution in PBS.

APPLICATIONS

Please Note: Optimal dilutions should be determined by each laboratory for each application. *General Protocols* are available in the *Technical Information* section on our website.

	Recommended Concentration	Sample
Flow Cytometry	2.5 µg/10 ⁶ cells	See Below
CyTOF-ready	Ready to be labeled using established conjugation methods. No BSA or other carrier proteins that could interfere with conjugation.	

DATA



PREPARATION AND STORAGE

Reconstitution	Reconstitute at 0.5 mg/mL in sterile PBS.
Shipping	The product is shipped at ambient temperature. Upon receipt, store it immediately at the temperature recommended below. *Small pack size (-SP) is shipped with polar packs. Upon receipt, store it immediately at -20 to -70 °C
Stability & Storage	Use a manual defrost freezer and avoid repeated freeze-thaw cycles. <ul style="list-style-type: none"> ● 12 months from date of receipt, -20 to -70 °C as supplied. ● 1 month, 2 to 8 °C under sterile conditions after reconstitution. ● 6 months, -20 to -70 °C under sterile conditions after reconstitution.

BACKGROUND

Complement Component 3a receptor (C3a R) is an ~90 kDa G-protein coupled 7-transmembrane sulfated glycoprotein expressed on myeloid peripheral blood leukocytes, and on activated lymphocytes, endothelial and internal organ epithelial cells. Engagement of C3a R by C3a activates mast cells and neutrophils, triggering degranulation in airways during asthmatic allergen challenges. It assists in Th2-type inflammatory reactions and stimulates leukocyte chemotaxis. Human C3a R extracellular regions share 50% and 42% amino acid identity with mouse and rat C3a R, respectively.