

DESCRIPTION

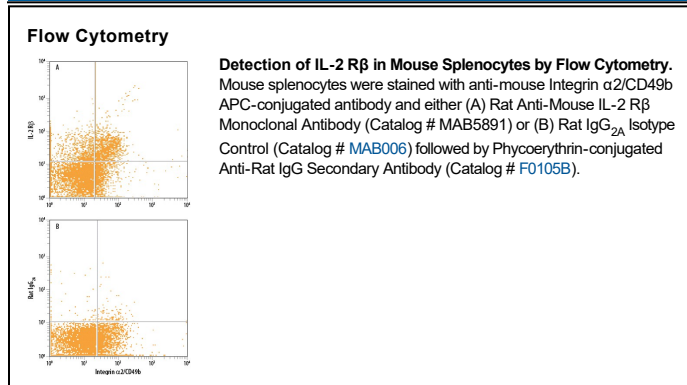
Species Reactivity	Mouse
Specificity	Detects mouse IL-2 R β in direct ELISAs. In direct ELISAs, no cross-reactivity with recombinant human (rh) IL-2 R α , rhIL-2 R β , recombinant mouse (rm) IL-2 R γ , rhIL-15 R α , or rmIL-21 R is observed.
Source	Monoclonal Rat IgG _{2A} Clone # 130122
Purification	Protein A or G purified from hybridoma culture supernatant
Immunogen	Mouse myeloma cell line NS0-derived recombinant mouse IL-2 R β Ala27-Glu240 Accession # P16297
Formulation	Lyophilized from a 0.2 μ m filtered solution in PBS with Trehalose. See Certificate of Analysis for details. *Small pack size (-SP) is supplied either lyophilized or as a 0.2 μ m filtered solution in PBS.

APPLICATIONS

Please Note: Optimal dilutions should be determined by each laboratory for each application. *General Protocols* are available in the *Technical Information* section on our website.

	Recommended Concentration	Sample
Flow Cytometry	2.5 μ g/10 ⁶ cells	See Below
CyTOF-ready	Ready to be labeled using established conjugation methods. No BSA or other carrier proteins that could interfere with conjugation.	

DATA



PREPARATION AND STORAGE

Reconstitution	Reconstitute at 0.5 mg/mL in sterile PBS.
Shipping	The product is shipped at ambient temperature. Upon receipt, store it immediately at the temperature recommended below. *Small pack size (-SP) is shipped with polar packs. Upon receipt, store it immediately at -20 to -70 °C
Stability & Storage	Use a manual defrost freezer and avoid repeated freeze-thaw cycles. <ul style="list-style-type: none"> ● 12 months from date of receipt, -20 to -70 °C as supplied. ● 1 month, 2 to 8 °C under sterile conditions after reconstitution. ● 6 months, -20 to -70 °C under sterile conditions after reconstitution.

BACKGROUND

IL-2 R β (IL-2 Receptor β ; designated CD122) is a type I transmembrane protein that associates with IL-2 R α and the common γ chain to form a high affinity heterotrimeric receptor complex for IL-2. IL-2 R β and the common γ chain can also associate with IL-15 R α . IL-2 R β is expressed by T, B, NK cells and monocyte/macrophages.