

**DESCRIPTION**

<b>Species Reactivity</b>	Rat
<b>Specificity</b>	Detects rat $\alpha_{2u}$ -Globulin in direct ELISAs.
<b>Source</b>	Monoclonal Mouse IgG <sub>1</sub> Clone # 129736
<b>Purification</b>	Protein A or G purified from hybridoma culture supernatant
<b>Immunogen</b>	Rat urine-derived $\alpha_{2u}$ -Globulin
<b>Formulation</b>	Lyophilized from a 0.2 $\mu$ m filtered solution in PBS with Trehalose. See Certificate of Analysis for details. *Small pack size (-SP) is supplied as a 0.2 $\mu$ m filtered solution in PBS.

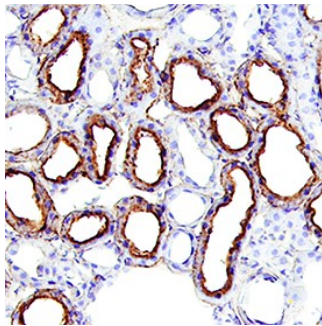
**APPLICATIONS**

**Please Note:** Optimal dilutions should be determined by each laboratory for each application. *General Protocols* are available in the *Technical Information* section on our website.

	<b>Recommended Concentration</b>	<b>Sample</b>
<b>Immunohistochemistry</b>	8-25 $\mu$ g/mL	See Below

**DATA**

**Immunohistochemistry**



**$\alpha_{2u}$ -Globulin in Rat Kidney.**  $\alpha_{2u}$ -Globulin was detected in perfusion fixed frozen sections of rat kidney using Mouse Anti-Rat  $\alpha_{2u}$ -Globulin Monoclonal Antibody (Catalog # MAB586) at 15  $\mu$ g/mL overnight at 4 °C. Tissue was stained using the Anti-Rat HRP-DAB Cell & Tissue Staining Kit (brown; Catalog # CTS017) and counterstained with hematoxylin (blue). Specific staining was localized to convoluted tubules. View our protocol for [Chromogenic IHC Staining of Frozen Tissue Sections](#).

**PREPARATION AND STORAGE**

<b>Reconstitution</b>	Reconstitute at 0.5 mg/mL in sterile PBS.
<b>Shipping</b>	The product is shipped at ambient temperature. Upon receipt, store it immediately at the temperature recommended below. *Small pack size (-SP) is shipped with polar packs. Upon receipt, store it immediately at -20 to -70 °C
<b>Stability &amp; Storage</b>	<b>Use a manual defrost freezer and avoid repeated freeze-thaw cycles.</b> <ul style="list-style-type: none"> <li>● 12 months from date of receipt, -20 to -70 °C as supplied.</li> <li>● 1 month, 2 to 8 °C under sterile conditions after reconstitution.</li> <li>● 6 months, -20 to -70 °C under sterile conditions after reconstitution.</li> </ul>

**BACKGROUND**

$\alpha_{2u}$  Globulin, also known as PGCL1, is a member of a highly homologous multigene family of more than 20 members that show 87%-98% amino acid identity. It is expressed at highest levels in male liver and coagulate glands.