

## DESCRIPTION

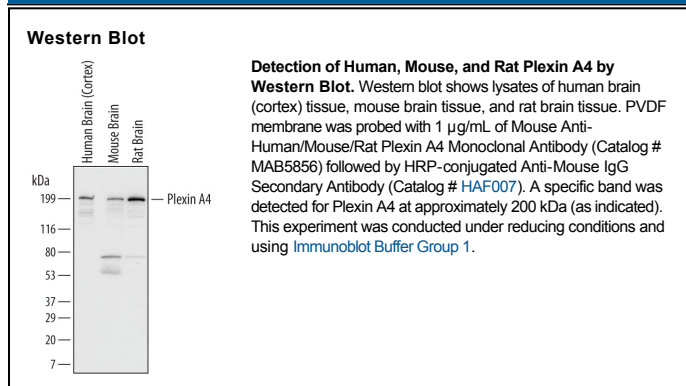
<b>Species Reactivity</b>	Human/Mouse/Rat
<b>Specificity</b>	Detects human Plexin A4 in direct ELISAs and Western blots. In Western blots, approximately 25% cross-reactivity with recombinant mouse (rm) Plexin A1 is observed. In direct ELISAs and Western blots, less than 5% cross-reactivity with recombinant human Plexin B1, B2, B3, C1, D1, rmPlexin A2, and A3 is observed.
<b>Source</b>	Monoclonal Mouse IgG <sub>1</sub> Clone # 707201
<b>Purification</b>	Protein A or G purified from hybridoma culture supernatant
<b>Immunogen</b>	Chinese hamster ovary cell line CHO-derived recombinant human Plexin A4 Thr24-Pro1237 Accession # Q9HCM2
<b>Formulation</b>	Lyophilized from a 0.2 µm filtered solution in PBS with Trehalose. See Certificate of Analysis for details. *Small pack size (-SP) is supplied as a 0.2 µm filtered solution in PBS.

## APPLICATIONS

**Please Note:** Optimal dilutions should be determined by each laboratory for each application. *General Protocols* are available in the *Technical Information* section on our website.

	<b>Recommended Concentration</b>	<b>Sample</b>
<b>Western Blot</b>	1 µg/mL	See Below

## DATA



## PREPARATION AND STORAGE

<b>Reconstitution</b>	Sterile PBS to a final concentration of 0.5 mg/mL.
<b>Shipping</b>	The product is shipped at ambient temperature. Upon receipt, store it immediately at the temperature recommended below. *Small pack size (-SP) is shipped with polar packs. Upon receipt, store it immediately at -20 to -70 °C
<b>Stability &amp; Storage</b>	<b>Use a manual defrost freezer and avoid repeated freeze-thaw cycles.</b> <ul style="list-style-type: none"> <li>● 12 months from date of receipt, -20 to -70 °C as supplied.</li> <li>● 1 month, 2 to 8 °C under sterile conditions after reconstitution.</li> <li>● 6 months, -20 to -70 °C under sterile conditions after reconstitution.</li> </ul>

**BACKGROUND**

Plexin A4 is a 220-230 kDa member of the plexin A subfamily, plexin family of proteins (1). It is found on sensory, autonomic and motor neurons and oligodendrocytes, plus T cells and dendritic cells (1-8). Mature human Plexin A4 is an 1871 amino acid (aa) type I transmembrane glycoprotein with a 23 aa signal sequence, a 1214 aa extracellular domain (ECD), and a 636 aa cytoplasmic region. The ECD contains one Sema-domain (aa 51-482), three PSI domains (aa 509-856) and four IPT regions (aa 858-1230) that contain a phosphoserine at aa 946 (1). Of three isoform variants, one shows a 65 aa substitution for aa 458-1894, a second shows an 80 aa substitution for aa 1292-1894, and a third shows the just mentioned 80 aa substitution coupled to a 14 aa substitution for aa 1-535 (9). The human Plexin A4 ECD shares 97% aa identity with mouse, equine, canine, and bovine Plexin A4. Full-length Plexin A4 also shares 67% aa identity with the most related family member, Plexin A2. Plexin A4 regulates cell migration, activation and axon guidance via repulsion (1-5). It serves as a receptor for transmembrane semaphorins, Sema6A and 6B, and as a coreceptor with neuropilin-1 for the secreted semaphorin, Sema3A (1-8). During development, it plays a role in nerve migration and midline crossing and down-regulates dendrite formation (2-8). It is often co-expressed with Plexin A3, which can also engage class 6 semaphorins but prefers Sema3F/ neuropilin-2 to Sema3A/neuropilin-1 (3, 8). Thus, Plexins A3 and A4 are redundant in some functions, but unique in others. In T cells, Plexin A4 engages Sema3A and negatively regulates TCR signals (6).

**References:**

1. Suto, F. *et al.* (2003) *Mech. Dev.* **120**:385.
2. Suto, F. *et al.* (2005) *J. Neurosci.* **25**:3628.
3. Faulkner, R.L. *et al.* (2008) *Neural Dev.* **3**:21.
4. Waimey, K.E. *et al.* (2008) *Dev. Biol.* **315**:448.
5. Runker, A.E. *et al.* (2008) *Neural Dev.* **3**:34.
6. Yamamoto, M. *et al.* (2008) *Int. Immunol.* **20**:413.
7. Okada, A. *et al.* (2007) *Biochem. Biophys. Res. Commun.* **352**:158.
8. Yaron, A. *et al.* (2005) *Neuron* **45**:513.
9. Protein Accession # NP\_861440, EAW83796, EAL24077.