

DESCRIPTION

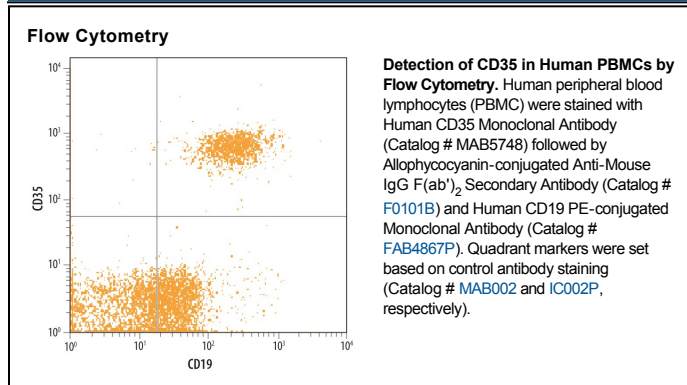
Species Reactivity	Human
Specificity	Detects human CD35 in direct ELISAs. In direct ELISAs, no cross-reactivity with recombinant rat CSMD1, recombinant human (rh) CSMD2, rhCSMD3, rhHABP1/C1QBP, or rhComplement Factor H is observed.
Source	Monoclonal Mouse IgG ₁ Clone # 594708
Purification	Protein A or G purified from hybridoma culture supernatant
Immunogen	Mouse myeloma cell line NS0-derived recombinant human CD35 Gln42-Asp1971 (His1208Arg) Accession # CAA68755
Formulation	Lyophilized from a 0.2 µm filtered solution in PBS with Trehalose. See Certificate of Analysis for details. *Small pack size (-SP) is supplied as a 0.2 µm filtered solution in PBS.

APPLICATIONS

Please Note: Optimal dilutions should be determined by each laboratory for each application. *General Protocols* are available in the *Technical Information* section on our website.

	Recommended Concentration	Sample
Flow Cytometry	2.5 µg/10 ⁶ cells	See Below
CyTOF-ready	Ready to be labeled using established conjugation methods. No BSA or other carrier proteins that could interfere with conjugation.	

DATA



PREPARATION AND STORAGE

Reconstitution	Sterile PBS to a final concentration of 0.5 mg/mL.
Shipping	The product is shipped at ambient temperature. Upon receipt, store it immediately at the temperature recommended below. *Small pack size (-SP) is shipped with polar packs. Upon receipt, store it immediately at -20 to -70 °C
Stability & Storage	Use a manual defrost freezer and avoid repeated freeze-thaw cycles. <ul style="list-style-type: none"> ● 12 months from date of receipt, -20 to -70 °C as supplied. ● 1 month, 2 to 8 °C under sterile conditions after reconstitution. ● 6 months, -20 to -70 °C under sterile conditions after reconstitution.

BACKGROUND

CD35, also known as complement receptor 1 (CR1), is a 220-300 kDa N-glycosylated member of the RCA (regulators of complement activation) family of proteins. CD35 binds and internalizes particles and immune complexes that are opsonized with MBL or complement components C3b, C3i, C4b, or C1q. CD35 additionally protects the cell from complement-mediated lysis by serving as a cofactor for Factor I and inhibiting the C3 and C5 convertases. The extracellular domain (ECD) of human CD35 contains 30 tandem SCR/SUSHI repeats. A soluble form of the CD35 ECD circulates in the serum. A mouse ortholog of human CD35 has not been described, although alternate splicing of mouse CD21/CR2 generates a protein with homology to some SCR repeats of human CD35. Cell surface CD35 is widely expressed on hematopoietic cells.