

DESCRIPTION

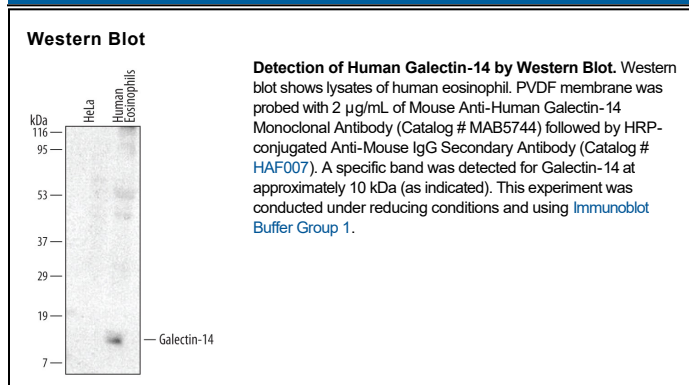
Species Reactivity	Human
Specificity	Detects human Galectin-14 in direct ELISAs and Western blots. In direct ELISAs, no cross-reactivity with recombinant human Galectin-1, -2, -3, -4, -7, -8, -10, or recombinant mouse Galectin-9 is observed.
Source	Monoclonal Mouse IgG _{2B} Clone # 511124
Purification	Protein A or G purified from hybridoma culture supernatant
Immunogen	<i>E. coli</i> -derived recombinant human Galectin-14 Met1-Asp139 Accession # Q8TCE9
Formulation	Lyophilized from a 0.2 µm filtered solution in PBS with Trehalose. See Certificate of Analysis for details. *Small pack size (-SP) is supplied either lyophilized or as a 0.2 µm filtered solution in PBS.

APPLICATIONS

Please Note: Optimal dilutions should be determined by each laboratory for each application. [General Protocols](#) are available in the Technical Information section on our website.

	Recommended Concentration	Sample
Western Blot	2 µg/mL	See Below

DATA



PREPARATION AND STORAGE

Reconstitution	Reconstitute at 0.5 mg/mL in sterile PBS.
Shipping	The product is shipped at ambient temperature. Upon receipt, store it immediately at the temperature recommended below. *Small pack size (-SP) is shipped with polar packs. Upon receipt, store it immediately at -20 to -70 °C
Stability & Storage	Use a manual defrost freezer and avoid repeated freeze-thaw cycles. <ul style="list-style-type: none"> 12 months from date of receipt, -20 to -70 °C as supplied. 1 month, 2 to 8 °C under sterile conditions after reconstitution. 6 months, -20 to -70 °C under sterile conditions after reconstitution.

BACKGROUND

Galectin-14, also known as placental protein 13-like (PPL13), belongs the galectin family of carbohydrate binding proteins. It is expressed intracellularly in placenta and eosinophils and is released by eosinophils following allergen stimulation. Galectin-14 may be involved in the development of allergic inflammation.