

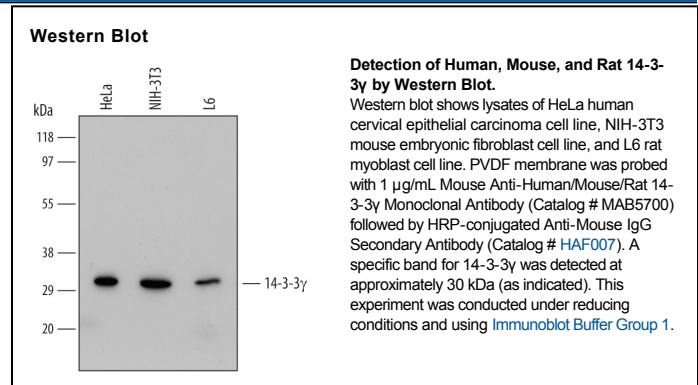
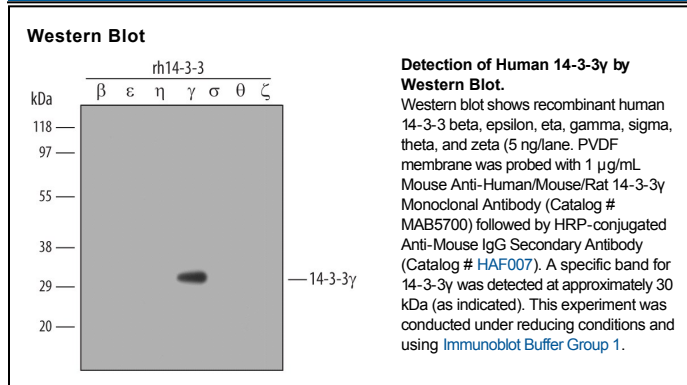
DESCRIPTION	
Species Reactivity	Human/Mouse/Rat
Specificity	Detects human, mouse, and rat 14-3-3 γ in Western blots.
Source	Monoclonal Mouse IgG _{2B} Clone # 505810
Purification	Protein A or G purified from hybridoma culture supernatant
Immunogen	<i>E. coli</i> -derived recombinant human 14-3-3 γ Met1-Asn247 Accession # P61981
Formulation	Lyophilized from a 0.2 μ m filtered solution in PBS with Trehalose. See Certificate of Analysis for details. *Small pack size (-SP) is supplied as a 0.2 μ m filtered solution in PBS.

APPLICATIONS

Please Note: Optimal dilutions should be determined by each laboratory for each application. General Protocols are available in the Technical Information section on our website.

	Recommended Concentration	Sample
Western Blot	1 μ g/mL	See Below

DATA



PREPARATION AND STORAGE

Reconstitution	Reconstitute at 0.5 mg/mL in sterile PBS.
Shipping	The product is shipped at ambient temperature. Upon receipt, store it immediately at the temperature recommended below. *Small pack size (-SP) is shipped with polar packs. Upon receipt, store it immediately at -20 to -70 °C
Stability & Storage	Use a manual defrost freezer and avoid repeated freeze-thaw cycles. <ul style="list-style-type: none"> ● 12 months from date of receipt, -20 to -70 °C as supplied. ● 1 month, 2 to 8 °C under sterile conditions after reconstitution. ● 6 months, -20 to -70 °C under sterile conditions after reconstitution.

BACKGROUND

14-3-3 proteins are a highly conserved family of homo- and heterodimeric phosphoserine/threonine-binding proteins present in all eukaryotic cells. 14-3-3 proteins act as key regulators of intracellular signal transduction through their ability to bind specific motifs phosphorylated on serine or threonine. There are at least 7 distinct mammalian 14-3-3 genes: α/β , ϵ , η , γ , τ/θ , σ , and ζ/δ . 14-3-3 γ becomes phosphorylated in response to PDGF and subsequently interacts with different PKC isoforms.