

DESCRIPTION

Species Reactivity	Human
Specificity	Detects human SALM2 in direct ELISAs. In direct ELISAs, no cross-reactivity with recombinant human SALM1, 3, or 4 is observed.
Source	Monoclonal Mouse IgG _{2B} Clone # 610712
Purification	Protein A or G purified from hybridoma culture supernatant
Immunogen	Chinese hamster ovary cell line CHO-derived recombinant human SALM2 Gln32-Gly534 (predicted) Accession # Q9P244
Formulation	Lyophilized from a 0.2 µm filtered solution in PBS with Trehalose. See Certificate of Analysis for details. *Small pack size (-SP) is supplied as a 0.2 µm filtered solution in PBS.

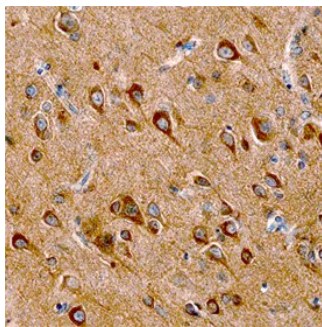
APPLICATIONS

Please Note: Optimal dilutions should be determined by each laboratory for each application. *General Protocols* are available in the *Technical Information* section on our website.

	Recommended Concentration	Sample
Immunohistochemistry	8-25 µg/mL	See Below

DATA

Immunohistochemistry



SALM2 in Human Cerebellum. SALM2 was detected in immersion fixed paraffin-embedded sections of human cerebellum using Human SALM2/LRFN1 Monoclonal Antibody (Catalog # MAB5669) at 15 µg/mL overnight at 4 °C. Before incubation with the primary antibody, tissue was subjected to heat-induced epitope retrieval using Antigen Retrieval Reagent-Basic (Catalog # CTS013). Tissue was stained using the Anti-Mouse HRP-DAB Cell & Tissue Staining Kit (brown; Catalog # CTS002) and counterstained with hematoxylin (blue). View our protocol for [Chromogenic IHC Staining of Paraffin-embedded Tissue Sections](#).

PREPARATION AND STORAGE

Reconstitution	Sterile PBS to a final concentration of 0.5 mg/mL.
Shipping	The product is shipped at ambient temperature. Upon receipt, store it immediately at the temperature recommended below. *Small pack size (-SP) is shipped with polar packs. Upon receipt, store it immediately at -20 to -70 °C
Stability & Storage	Use a manual defrost freezer and avoid repeated freeze-thaw cycles. <ul style="list-style-type: none"> ● 12 months from date of receipt, -20 to -70 °C as supplied. ● 1 month, 2 to 8 °C under sterile conditions after reconstitution. ● 6 months, -20 to -70 °C under sterile conditions after reconstitution.

BACKGROUND

SALM2 (synaptic adhesion-like molecule 2), also called LRFN1 (leucine-rich repeat and fibronectin type-III domain-containing protein 1) is a 105 kDa member of the LRFN family of type I transmembrane glycoproteins. The 740 amino acid (aa) mature human SALM2 contains a 505 aa extracellular domain that includes seven leucine-rich repeats (LRR), an IgC2-like domain, and a fibronectin type-III domain. Mature human SALM2 shares 99% aa identity with mouse and rat SALM2. SALM2 co-localizes with both pre- and post-synaptic proteins at excitatory synapses in mature neurons and promotes neurite outgrowth.