

DESCRIPTION

Species Reactivity	Human
Specificity	Detects human Endothelin-3.
Source	Monoclonal Mouse IgG ₁ Clone # 3B6
Purification	Protein A or G purified from hybridoma culture supernatant
Immunogen	Human Endothelin-3 synthetic peptide Accession # P14138
Formulation	Lyophilized from a 0.2 µm filtered solution in PBS with Trehalose. See Certificate of Analysis for details. *Small pack size (-SP) is supplied either lyophilized or as a 0.2 µm filtered solution in PBS.

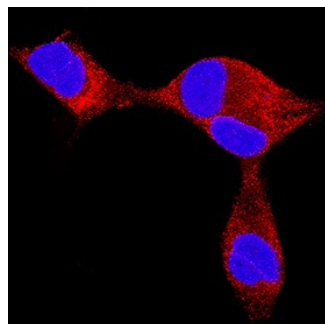
APPLICATIONS

Please Note: Optimal dilutions should be determined by each laboratory for each application. *General Protocols* are available in the *Technical Information* section on our website.

	Recommended Concentration	Sample
Immunocytochemistry	8-25 µg/mL	See Below

DATA

Immunocytochemistry



Endothelin-3 in LNCaP Human Cell Line.

Endothelin-3 was detected in immersion fixed LNCaP human prostate cancer cell line using Mouse Anti-Human Endothelin-3 Monoclonal Antibody (Catalog # MAB5579) at 25 µg/mL for 3 hours at room temperature. Cells were stained using the NorthernLights™ 557-conjugated Anti-Mouse IgG Secondary Antibody (red; Catalog # NL007) and counterstained with DAPI (blue). Specific staining was localized to cell secretion. View our protocol for [Fluorescent ICC Staining of Cells on Coverslips](#).

PREPARATION AND STORAGE

Reconstitution	Reconstitute at 0.5 mg/mL in sterile PBS.
Shipping	The product is shipped at ambient temperature. Upon receipt, store it immediately at the temperature recommended below. *Small pack size (-SP) is shipped with polar packs. Upon receipt, store it immediately at -20 to -70 °C
Stability & Storage	Use a manual defrost freezer and avoid repeated freeze-thaw cycles. <ul style="list-style-type: none"> ● 12 months from date of receipt, -20 to -70 °C as supplied. ● 1 month, 2 to 8 °C under sterile conditions after reconstitution. ● 6 months, -20 to -70 °C under sterile conditions after reconstitution.

BACKGROUND

Endothelin-1, -2, and -3 are encoded by three separate genes as prepropeptides that are cleaved to yield the secreted and inactive big endothelins. Big Endothelin-3 is further cleaved by Kell blood group antigen endopeptidases to generate the 21 amino acid (aa) bioactive mature peptide. It interacts primarily with the 7TM receptor EDNRB to induce a variety of effects including bronchoconstriction, arteriolar vasoconstriction, gall bladder contraction, insulin and norepinephrine release, and the maintenance and development of melanocytes and neural crest progenitors. Mature human Endothelin-3 shares 100% aa sequence identity with mouse and rat Endothelin-3.